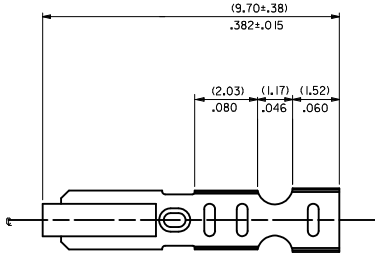
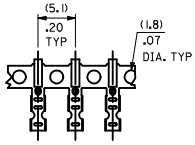
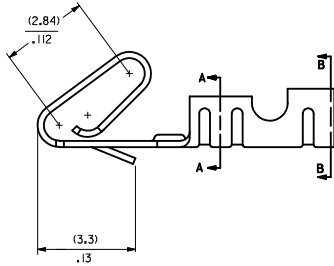
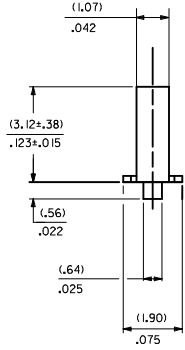
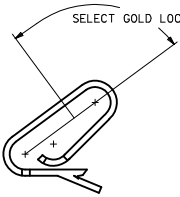


CARRIER VIEW

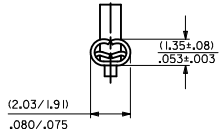


- NOTES:
- MATERIAL:
(0.201/008 THICK BRASS
 - FINISH:
122 - OVERALL TIN: (0.00381)/.000150 MIN. TIN OVER
(0.00076)/.000030 MIN NICKEL
154 - OVERALL TIN: (0.00254)/.000100 MIN. TIN OVER
(0.00127)/.000050 MIN NICKEL
P909 - OVERALL HOT TIN DIP: (0.00254)/.000100 MIN.
550 - SELECT GOLD: (0.000381)/.000015 MIN.
OVERALL GOLD FLASH: (0.00005)/.000002 MIN.
OVERALL NICKEL UNDERPLATE: (0.00076)/.000030 MIN.
555- SELECT GOLD (0.000381)/.000015 MIN.
OVERALL NICKEL UNDERPLATE: (0.00076)/.000030
558 - SELECT GOLD: (0.00076)/.000030 MIN.
OVERALL GOLD FLASH: (0.00005)/.000002 MIN.
OVERALL NICKEL UNDERPLATE: (0.00127)/.000050 MIN.
 - PRODUCT SPEC: PS-10-07
 - PACKAGING SPECIFICATION: LOOSE TERMINALS: PER FK-2759-001
CHAIN FORM TERMINALS: NONE
 - CRIMP IS FOR 22-30 GA WIRE WITH (1.57)/.062 DIA INSULATION MAX.
 - INSERTION FORCE OF TERMINAL INTO (2.54)/.100 CENTERLINE CONNECTOR IS 2.5 LBS. MAX
 - TERMINAL RETENTION IN HOUSING IS 26.7N / 6LBS MIN. WHEN PULLED AT THE RATE OF (25.4MM) / 1 INCH PER MINUTE.
 - DIMENSIONS GIVEN ACROSS CENTERLINES ARE SYMMETRICAL ABOUT THOSE CENTERLINES WITHIN HALF THE TOTAL TOLERANCE.
 - THIS PART CONFORMS TO CLASS B REQUIREMENTS OF COSMETIC SPECIFICATION PS-45499-002.

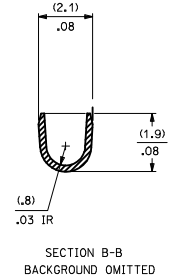
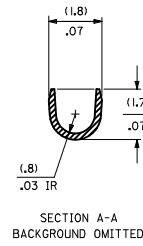
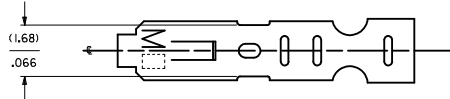
SELECT GOLD LOCATION



CRIMP DETAIL



CRIMPED TERMINAL 2759-(P909)C IS USED WITHOUT WIRE AND IS INSERTED INTO HOUSING TO PROVIDE TENSION WHEN ASSEMBLED TO HEADERS DURING SHIPMENT.



2759-(***) *
FORM
L=LOOSE
C=LOOSE CRIMPED
A=CHAIN PER ES-339-A
B=CHAIN PER ES-339-B
PLATING
SEE NOTE 2

| | | | | | | | |
|---|--|---|--|---|--------------|------------------------|---------------------------------|
| REVISE NOTE 7 IEC NO. UCP2011-2220 DRAWN BY: DRANKIPPER 2012/03/26 CHECKED BY: CHYD BANDERSON 2012/03/26 APPROVED BY: APPR:FSMTH 2012/04/05 | QUALITY SYMBOLS | GENERAL TOLERANCES (UNLESS SPECIFIED) | DIMENSION STYLE | SCALE | DESIGN UNITS | THIRD ANGLE PROJECTION | |
| | ∇=0 ∇=0 ∇=0 | mm INCH 4 PLACES ±.010 3 PLACES ±.025 ±.014 2 PLACES ±.036 ±.014 1 PLACE ±.036 ±.014 0 PLACE ±.036 ±.014 | MM/IN | DRAWN BY: SAMIEC 07/28/187 CHECKED BY: PATEL 07/28/187 APPROVED BY: FSMITH 2012/03/20 | | INCH | CRIMP TERMINAL 22-30 GA WIRE |
| | ANGULAR ±1/2° DRAFT WHERE APPLICABLE MUST REMAIN WITHIN DIMENSIONS | MATERIAL NO. SEE CHART SIZE D | DOCUMENT NO. SD-2759 SHEET NO. 1 OF 2 | | | | |

