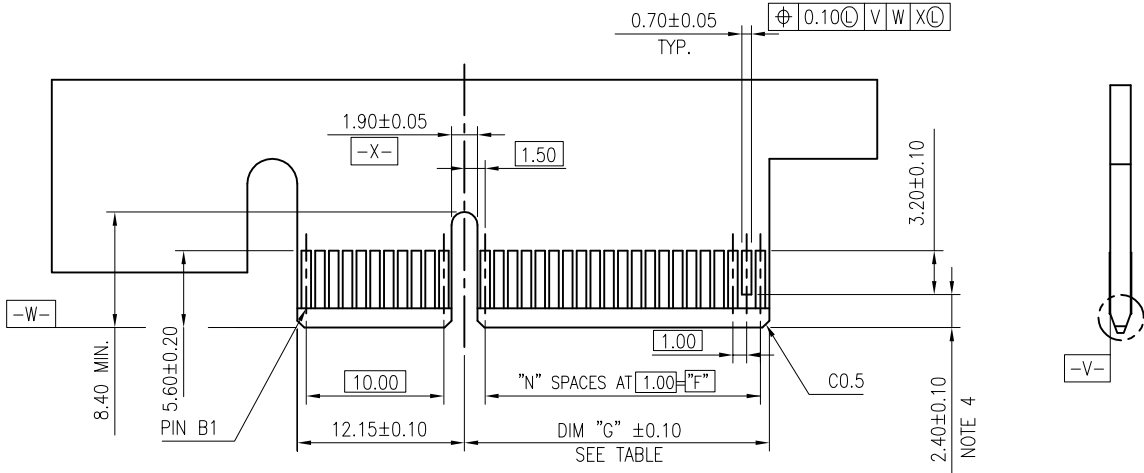


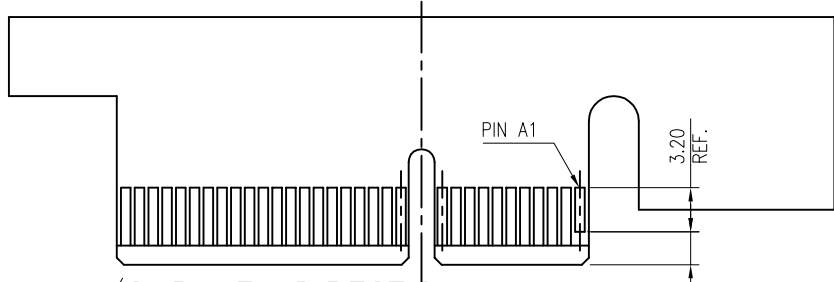
FCIconnect.com

Copyright FCI

mat'l. code		surface 58/ISO 1302		tolerance ISO 406 ISO 1101		projection		product family	
-		✓		ISO 1101		MM		PCI_EXPRESS	
ltr	ecn no	dr	date	tolerances unless otherwise specified		scale 1		title	
D	T07-1120	RC	07/31/'07	angles	linear	.X±.3		PCI_EXPRESS_CARD_EDGE ASSEMBLY(SMT)	
E	DG08-0111	RC	05/08/'08	0'±2'		.XX±.20		sheet 1 of 6	
F	T08-1097	RC	06/03/'08	MAGGIE_WU		06'/6/21		size	
G	T08-1XXX	RC	9/9/08	engr RICHARD_CHIU		06'/6/21		A4	
H	T10-0007	JH	1/30/10	chr PAUL_WANG		06'/6/21		10061913	
J	ELX-DG-14311	WL	2013/03/21	app JOSEPH_HSIA		06'/6/21		CUSTOMER Drawing	
K	ELX-DG-16289	ST	2013/11/13						
sheet index	revision sheet	K	K	K	K	K	K		
		1	2	3	4	5	6		



I/O PANEL DIRECTION
PRIMARY (COMPONENT) SIDE



I/O PANEL DIRECTION
SECONDARY (SOLDER) SIDE

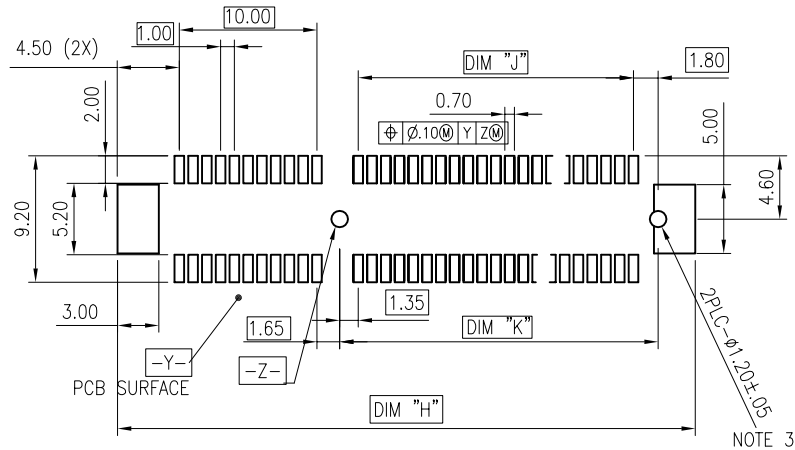
#	POS	REF.	N	DIM "G"	DIM "F"	"F"
36	6		8.15	6.00	B17	
64	20		22.15	20.00	B31	
98	37		39.15	37.00	B48	
164	70		72.15	70.00	B81	

ADD-IN CARD EDGE-FINGER DIMENSIONS

mat'l. code				surface 58/ISO 1302		tolerance ISO 406 ISO 1101		projection		product family PCI_EXPRESS					
ltr ecn no dr date				tolerances unless otherwise specified						title					
K - - -				angles linear		.X±.2		MM		PCI_EXPRESS_CARD_EDGE ASSEMBLY(SMT)					
				0°±2'		.XX±.13		scale 2		dwg no		sheet 2 of 6		size	
				dr MAGGIE_WU		06'/6/21		FCJ		10061913				A4	
				enr RICHARD_CHIU		06'/6/21				type		CUSTOMER Drawing			
				chr PAUL_WANG		06'/6/21									
				app JOSEPH_HSIA		06'/6/21									
sheet index		revision sheet		K 2											



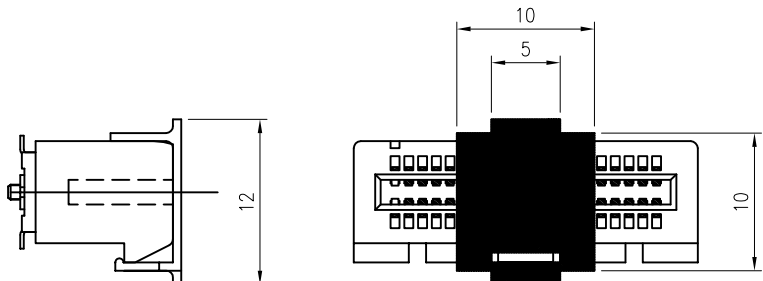
Copyright FCI



RECOMMENDED PCB LAYOUT, PAD TYPE

DIMENSIONS								
POSITION	A	B ± 0.15 -0.05	C ± 0.20	D ± 0.23	E ± 0.20	H ± 0.10	J	K ± 0.10
36	6.00	7.65	9.15	25.00	27.00	28.00	6.00	9.15
64	20.00	21.65	23.15	39.00	41.00	42.00	20.00	23.15
98	37.00	38.65	40.15	56.00	58.00	59.00	37.00	40.15
164	70.00	71.65	73.15	89.00	91.00	92.00	70.00	73.15

POSTION OF CAP



mat'l. code				surface 58/ISO 1302		tolerance ISO 406 ISO 1101		projection		product family				
-				✓				MM		PCI_EXPRESS				
ltr	ecn no	dr	date	tolerances unless otherwise specified				title						
K	-	-	-	angles linear		.X±.2		MM		PCI_EXPRESS_CARD_EDGE ASSEMBLY(SMT)				
				0'±2'		.XX±.13		scale 2		dwg no		sheet 3 of 6		size
				dr	MAGGIE_WU	06'/6/21	FCI		10061913				A4	
				enr	RICHARD_CHIU	06'/6/21			type		CUSTOMER Drawing			
				chr	PAUL_WANG	06'/6/21								
				app	JOSEPH_HSIA	06'/6/21								
sheet index		revision sheet		K 3										D

NOTES:

- 1.MATERIAL:
 - HOUSING: NYLON, GLASS FILLED UL94V-0 RATE, SUITABLE FOR I.R SOLDERING.
 - TERMINAL: COPPER ALLOY
 - PLATING: 50u" NICKEL UNDERPLATE ALL OVER
CONTACT AREA PLATING - SEE PRODUCT NUMBER CODE
SOLDER TAIL: TIN 100u" OVER 50u" NICKEL
 - METAL PADS: COPPER ALLOY
FINISH: 100u" TIN OVER 50u" NICKEL
- 2.PRODUCT SPECIFICATION: GS-12-390
- ③THE HORIZONTAL AXIS FOR THE PAD PATTERN IS ESTABLISHED BY A LINE THROUGH THE CENTER OF THE TWO Ø1.0 HOLES.
THE VERTICAL AXIS IS 90° TO THE HORIZONTAL AXIS, THROUGH THE CENTER OF DATUM $\square-Z$
- ④NO TIE BAR PERMITTED FROM CARD EDGE TO LEADING EDGE OF PAD FOR PINS A1.
- ⑤CHAMFER EDGES MUST BE FREE OF CUTTING BURRS.
- 6.RoHS COMPATIBLE PRODUCT SPECIFICATIONS
 - a - PLATING:
 - "LF" MEANS THE PRODUCT IS LEAD-FREE
 - b - MANUFACTURING PROCESS COMPATIBILITY
 - THE HOUSING WILL WITHSTAND EXPOSURE TO 260°C±5°C PEAK TEMPERATURE FOR 5 SECONDS IN A CONVECTION, INFRA-RED OR VAPOR PHASE REFLOW OVEN.
- 7.A Δ SYMBOL WILL BE NEXT TO ANY DIMENSION, VIEW, OR NOTE WHICH HAS BEEN MODIFIED WITH CURRENT DRAWING REVISION.

PRODUCT NUMBER CODE

10061913-X X X X L F

HOUSING COLOR OPTIONS

- 0-WHITE
- 1-BLACK

LEAD FREE

PACKAGING OPTIONS

- T-TRAY PACKAGING WITHOUT CAP
- R-TAPE & REEL PACKING WITHOUT CAP AND MYLAR (FOR 36P&64P OPTIONS ONLY)
- P-TAPE & REEL PACKING WITH CAP (FOR 36P&64P&98P OPTIONS ONLY)
- C-TRAY PACKAGING WITH CAP
- M-TAPE & REEL PACKING WITH MYLAR (FOR 36P&64P OPTIONS ONLY)
- N-TRAY PACKAGING WITH MYLAR
- Y-HARD TRAY(FOR 164P ONLY)
- Z-HARD TRAY PACKAGING WITH MAYLAR(FOR 164P ONLY)
- A-44MM WIDTH TAPE&REEL PACKING WITH MYLAR(FOR 36P ONLY)
- B-HARD TRAY PACKAGING WITH CAP(FOR 164P ONLY) Δ

TERMINAL PLATING OPTIONS

- 0-50u" Ni UNDERPLATE
30u" Au CONTACT AREA
100u" TIN TAIL AREA ----- COMPATIBLE RoHS
- 1-50u" Ni UNDERPLATE
15u" Au CONTACT AREA
100u" TIN TAIL AREA ----- COMPATIBLE RoHS
- 2-50u" Ni UNDERPLATE
GOLD FLASH CONTACT AREA
100u" TIN TAIL AREA ----- COMPATIBLE RoHS
- 3-50u" Ni UNDERPLATE
30u" Au CONTACT AREA
 Δ GOLD FLASH TAIL AREA ----- COMPATIBLE RoHS

POS OPTIONS

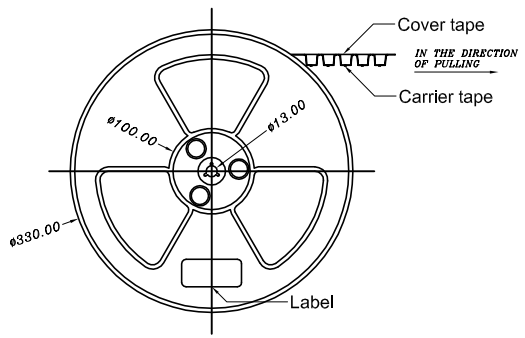
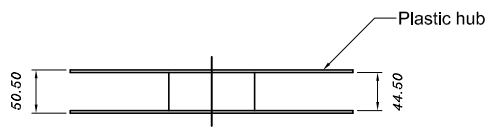
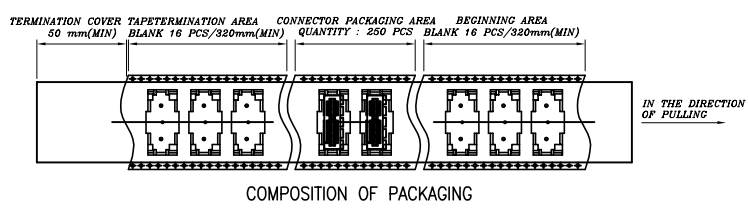
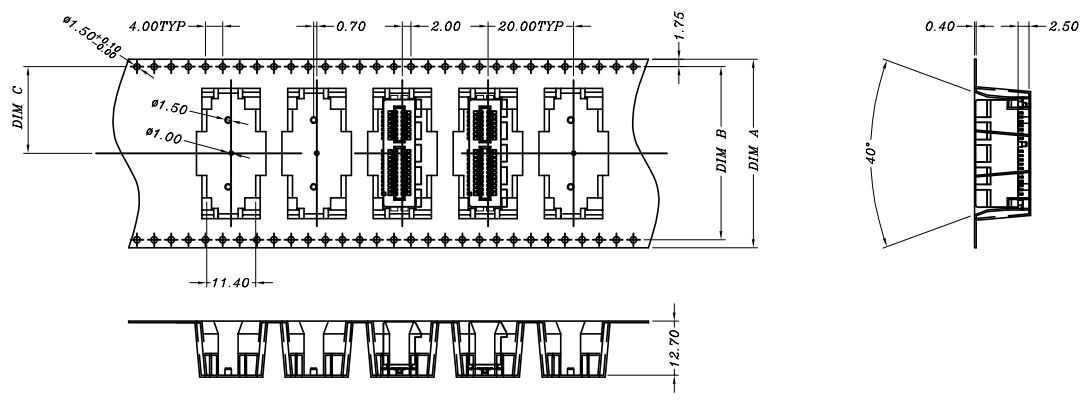
- 0-36
- 1-64
- 2-98
- 3-164



FCIconnect.com

Copyright FCI

mat'l. code				surface 58/ISO 1302 \checkmark		tolerance ISO 406 ISO 101		projection M		product family PCI_EXPRESS			
ltr	ecn no	dr	date	tolerances unless otherwise specified		angles linear		MM		title PCI_EXPRESS_CARD_EDGE ASSEMBLY(SMT)			
K	-	-	-										
				0'±2'		.X±.2		scale 2		dwg no sheet 4 of 6 size			
				dr MAGGIE_WU		06'/6/21		FCI		10061913 A4			
				enr RICHARD_CHIU		06'/6/21				type CUSTOMER Drawing			
				chr PAUL_WANG		06'/6/21							
				app JOSEPH_HSIA		06'/6/21							
sheet index	revision sheet	K	4										



TAPE AND REEL
PACKING
RECOMMENDED FOR
36PINS ONLY

DIMENSIONS					
POSITIONS	A	B	C	D REF.	E REF.
36 (10061913-xxxxALF)	44.00	40.40	20.20	44.5	50.5
64	56.00	52.60	26.30	56.4	60.4

mat'l. code			surface 58/ISO 1302		tolerance ISO 406 ISO 1101		projection		product family PCI_EXPRESS		
ltr	ecn no	dr	date	tolerances unless otherwise specified			MM		title PCI_EXPRESS_CARD_EDGE ASSEMBLY(SMT)		
K	-	-	-	angles	linear	.X±.3	scale 1		dwg no		
				0°±2'		.XX±.20	FCJ		sheet 5 of 6		size
				dr	MAGGIE_WU	06'/6/21			10061913		A4
				enr	RICHARD_CHIU	06'/6/21			type		CUSTOMER Drawing
				chr	PAUL_WANG	06'/6/21					
				app	JOSEPH_HSIA	06'/6/21					
sheet index	revision	K	5								



Copyright FCI

1 For PCI EXPRESS SMT TYPE 36P ONLY.

2. Material :

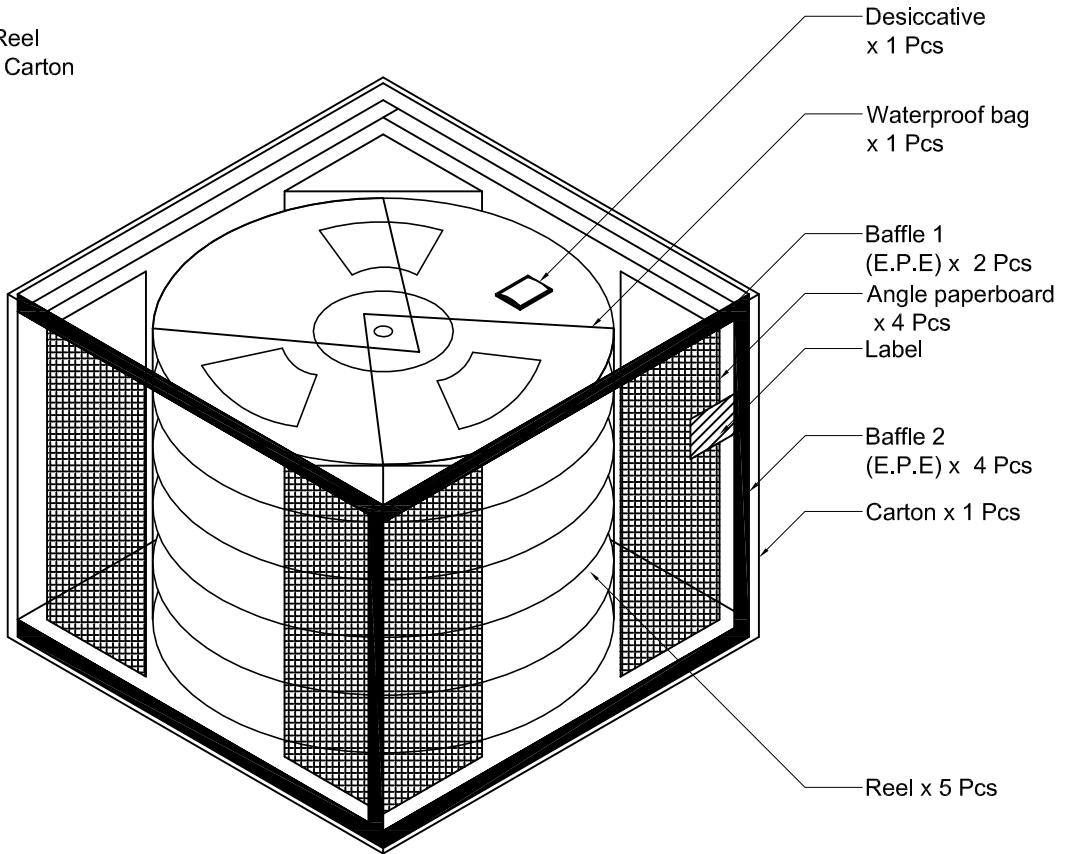
- 2.1 Reel :
 - 2.1.1 Plastic hub : High Impact Polystyrene
 - 2.1.2 Cover tape : PE
 - 2.1.3 Carrier tape : ABS
- 2.2 Waterproof bag : PE
- 2.3 Desiccative : Silica Gel
- 2.4 Carton : Corrugated paper
- 2.5 Baffle : E.P.E
- 2.6 Angle paperboard : Corrugated paper

3. Dimension :

- 3.1 Reel :
 - 3.1.1 Plastic hub : $\phi 330 \times T50.5$ mm
 - 3.1.2 Cover tape : 5690(L) x 37.4(W) mm
 - 3.1.3 Carrier tape : 5640(L) x 44(W)mm
- 3.2 Waterproof bag : 600(H) x 465(W) x 0.06(T) mm
- 3.3 Desiccative : 25 gram / Package
- 3.4 Carton : 380(L) x 380(W) x 300(H) mm
- 3.5 Baffle (1): 370(L) x 370(W) x 15(H) mm
- 3.6 Baffle (2): 355(L) x 252(W) x 15(H) mm
- 3.7 Angle paperboard : 252(H)

4. Quantity :

- 4.1 250 Pcs / Reel
- 4.2 1250 Pcs / Carton



FCIconnect.com

Copyright FCI

mat'l. code				surface 58/ISO 1302 <input checked="" type="checkbox"/>		tolerance ISO 406 ISO 1101		projection		product family PCI_EXPRESS		
ltr	ecn no	dr	date	tolerances unless otherwise specified		angles linear		MM		title PCI_EXPRESS_CARD_EDGE ASSEMBLY(SMT)		
K	-	-	-					scale 1		dwg no 10061913 sheet 6 of 6 size A4		
				dr MAGGIE_WU 06'/6/21		engr RICHARD_CHIU 06'/6/21				type CUSTOMER Drawing		
				chr PAUL_WANG 06'/6/21		app JOSEPH_HSIA 06'/6/21						
sheet index	revision sheet	K 6										