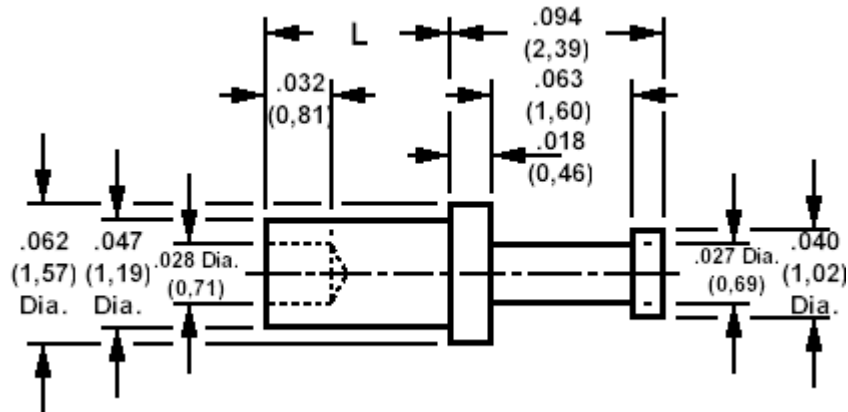


160-2085 Solder terminal, turreted

Recommended mounting hole .052 (1,32), #55 drill



How to order code

160-2085-XX-YY-00

Basic Part No XX = L dimension YY = Plating Finish

DIMENSIONS (XX)			
Basic Part No	(XX)	L	Board Thickness
160-2085	-11	.035 (0,89)	.016 (0,40)
	-01	.051 (1,30)	.031 (0,79)
	-02	.082 (2,08)	.062 (1,59)
	-03	.113 (2,87)	.094 (2,38)
	-04	.145 (3,68)	.125 (3,18)

MATERIALS			
Component	Material	Finish (YY)	
		-01	-05
Terminal	Brass	Silver	Electro Solder

SWAGE TOOLING	
Recommended Swaging Tools:-	
Anvil	435-6429-01-00-00
Roll punch	435-6629-01-00-00
Flare Punch	435-6657-01-00-00