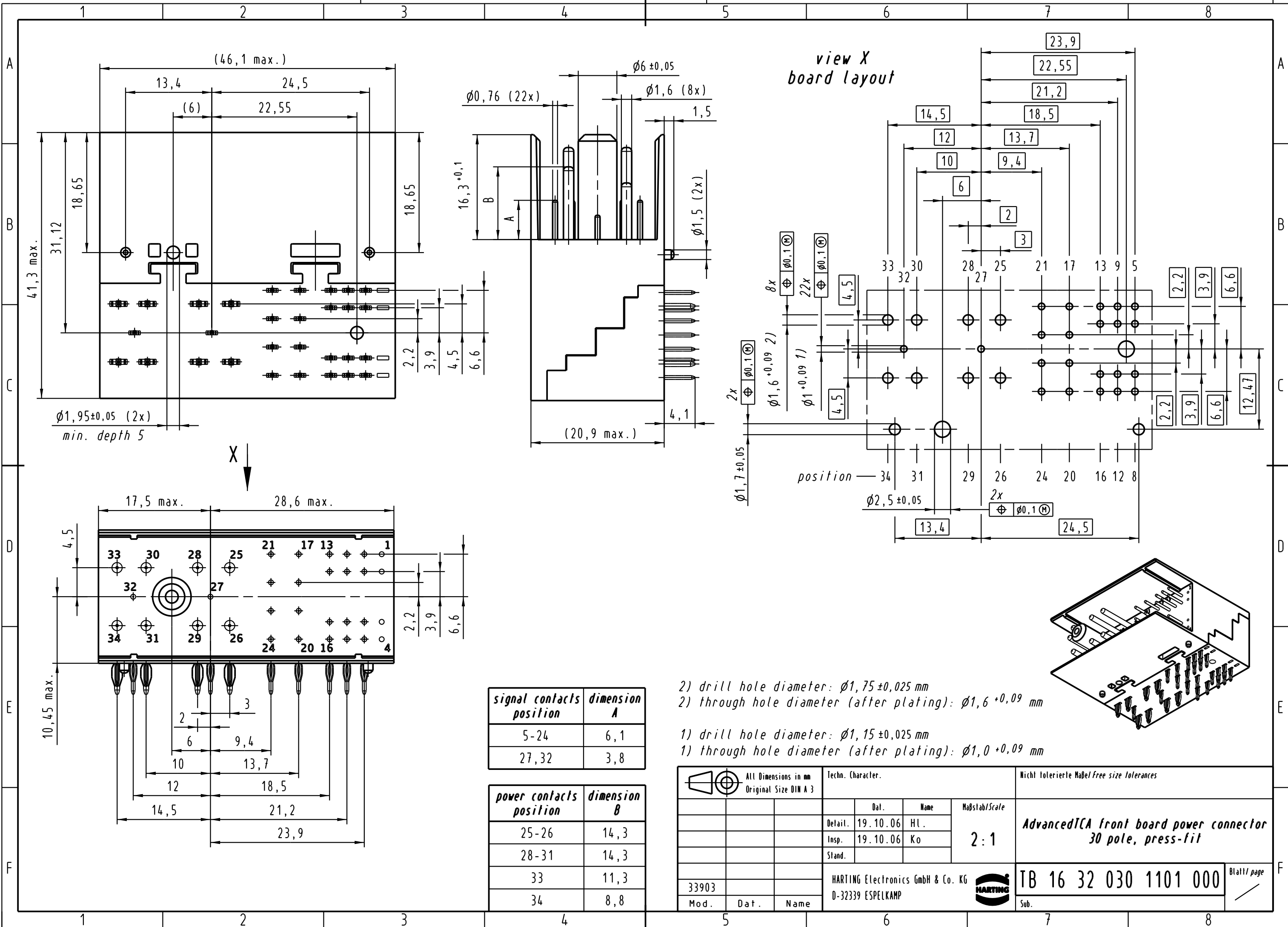


Alle Rechte vorbehalten. All rights reserved



view X
board layout

signal contacts position	dimension A
5-24	6,1
27,32	3,8

power contacts position	dimension B
25-26	14,3
28-31	14,3
33	11,3
34	8,8

- 2) drill hole diameter: $\phi 1,75 \pm 0,025$ mm
- 2) through hole diameter (after plating): $\phi 1,6 + 0,09$ mm
- 1) drill hole diameter: $\phi 1,15 \pm 0,025$ mm
- 1) through hole diameter (after plating): $\phi 1,0 + 0,09$ mm

All Dimensions in mm Original Size DIN A 3		Techn. Character.			Nicht tolerierte Maß Free size tolerances		
Mod.	Dat.	Name	Dat.	Name	Maßstab/Scale	AdvancedICA front board power connector 30 pole, press-fit	
33903			Detail.	19.10.06	HL.		2:1
			Insp.	19.10.06	Ko		
			Stand.				
HARTING Electronics GmbH & Co. KG D-32339 ESPELKAMP					TB 16 32 030 1101 000		
					Sub.		

