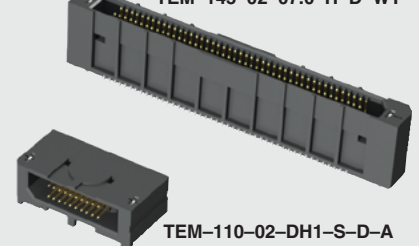
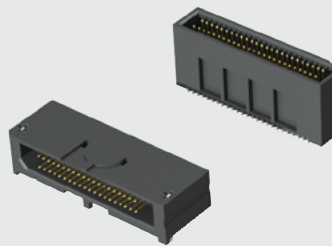


TEMS-125-02-03.0-H-D

TEM-145-02-07.0-H-D-WT



TEM-120-02-DH1-S-D-A

TEM-110-02-DH1-S-D-A

(0.80 mm) .0315"

TEM, TEMS, TEM-DH SERIES

# MICRO TIGER EYE™ HEADER

TEM, TEM-DH Mates with:  
SEM, SEML

TEMS Mates with:  
SEMS

## SPECIFICATIONS

For complete specifications and recommended PCB layouts see [www.samtec.com?TEM](http://www.samtec.com?TEM) or [www.samtec.com?SEMS](http://www.samtec.com?SEMS)

**Insulator Material:** Black Liquid Crystal Polymer  
**Terminal Material:** Phosphor Bronze  
**Plating:**

Au or Sn over  
50 μm (1.27 μm) Ni  
**Current Rating:**  
2.9 A per pin  
(2 pins powered)

**Voltage Rating:**  
235 VAC/330 VDC

**Operating Temp Range:**  
-55 °C to +125 °C

**RoHS Compliant:**  
Yes

## PROCESSING

**Lead-Free Solderable:**  
Yes  
**SMT Lead Coplanarity:**  
(0.10 mm) .004" max

## RECOGNITIONS

For complete scope of recognitions see [www.samtec.com/quality](http://www.samtec.com/quality)



<b>TYPE STRIP</b>	<b>1</b>	<b>NO. OF POSITIONS</b>	<b>02</b>	<b>STACK HEIGHT</b>	<b>PLATING OPTION</b>	<b>D</b>	<b>OPTION</b>	<b>OTHER OPTION</b>
<b>TEM</b> = Tiger Eye™ Strip		<b>05, 10, 15, 20, 25</b> (Per Row)		<b>-03.0</b> = 6 mm Stack Height	<b>-FG</b> = Gold Flash		Leave blank for TEMS	<b>-K</b> = (5.50 mm) .217" DIA Polyimide film Pick & Place Pad (Required for TEMS)
<b>TEMS</b> = Tiger Eye™ Slim Strip		<b>30, 35, 40, 45, 50</b> (Per Row) (TEM only) (Standard sizes)		<b>-04.0</b> = 7 mm Stack Height	<b>-G</b> = 10 μm (0.25 μm) Gold on contact, Gold Flash on tail		<b>-A</b> = Alignment Pin (Not available with -LC or -WT)	<b>-TR</b> = Tape & Reel (Required for TEMS)
				<b>-07.0</b> = 10 mm Stack Height	<b>-H</b> = 30 μm (0.76 μm) Gold on contact, Gold Flash on tail		<b>-LC</b> = Locking Clip (Not available with -A or -WT) (Manual placement required)	
							<b>-WT</b> = Weld Tab (Not available with -A or -LC)	

STACK HEIGHT	A	MATED HEIGHT* (WHEN MATED WITH SEM/SEMS)
-03.0	(5.610) .2209	6 mm
-04.0	(6.610) .2602	7 mm
-07.0	(9.610) .3783	10 mm

\*Processing conditions will affect mated height.

### POWER/SIGNAL APPLICATION

Compatible with UMPT/UMPS for flexible two-piece power/signal solutions

<b>TEM</b>	<b>1</b>	<b>NO. OF POSITIONS</b>	<b>02</b>	<b>DH1</b>	<b>PLATING OPTION</b>	<b>D</b>	<b>OPTION</b>
		<b>10, 15, 20, 25, 30, 35, 40, 45, 50</b> (Per Row) (Standard sizes)			<b>-F</b> = Gold Flash on contact, Matte Tin on tail		<b>-A</b> = Alignment Pin
					<b>-L</b> = 10 μm (0.25 μm) Gold on contact, Matte Tin on tail		
					<b>-S</b> = 30 μm (0.76 μm) Gold on contact, Matte Tin on tail		

### OTHER SOLUTIONS

- Latching option: See TEM-L1 in Discrete Wire Cable section.
- Board Stacking: See SFM, TFM Series
- Cable Assemblies: See SFSD, TFSD, SESDT Series

### ALSO AVAILABLE (MOQ Required)

- Other sizes
- Other platings

**Note:** Some sizes, styles and options are non-standard, non-returnable.

Due to technical progress, all designs, specifications and components are subject to change without notice.

# Mouser Electronics

Authorized Distributor

Click to View Pricing, Inventory, Delivery & Lifecycle Information:

[Samtec:](#)

[TEM-105-02-03.0-G-D-L1](#)