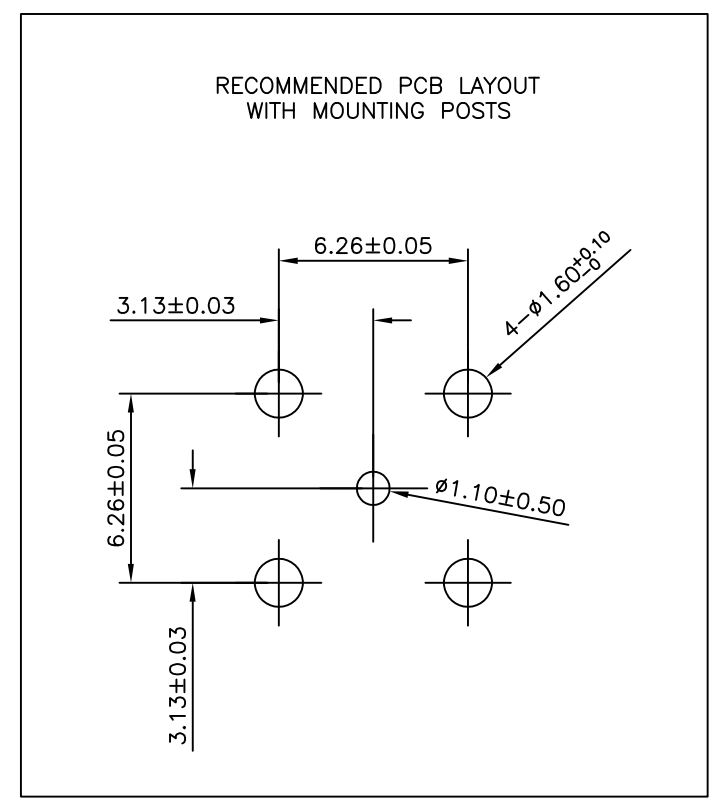
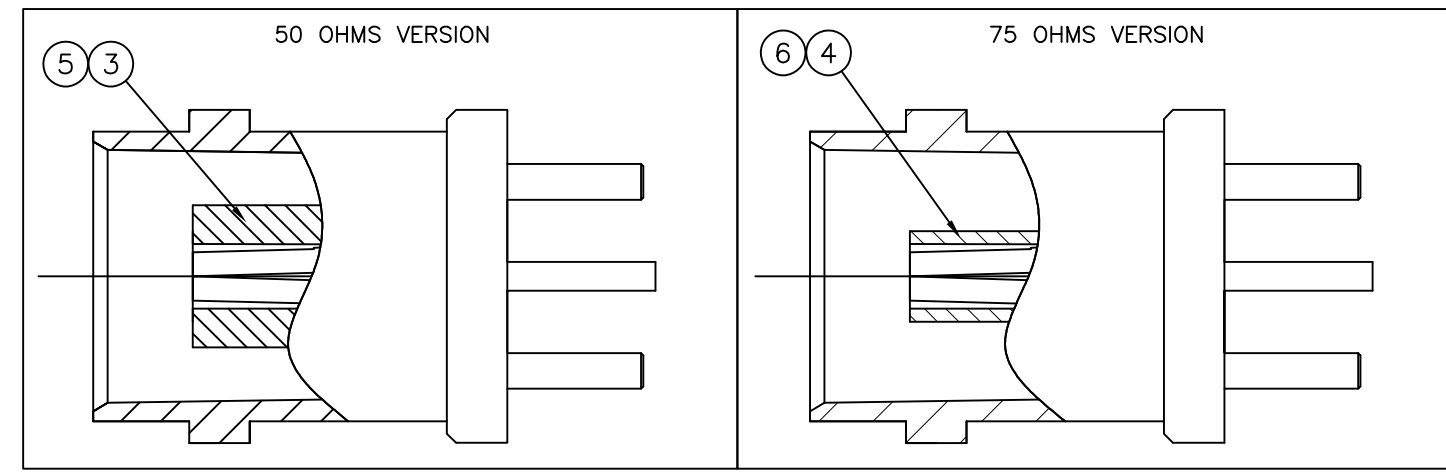
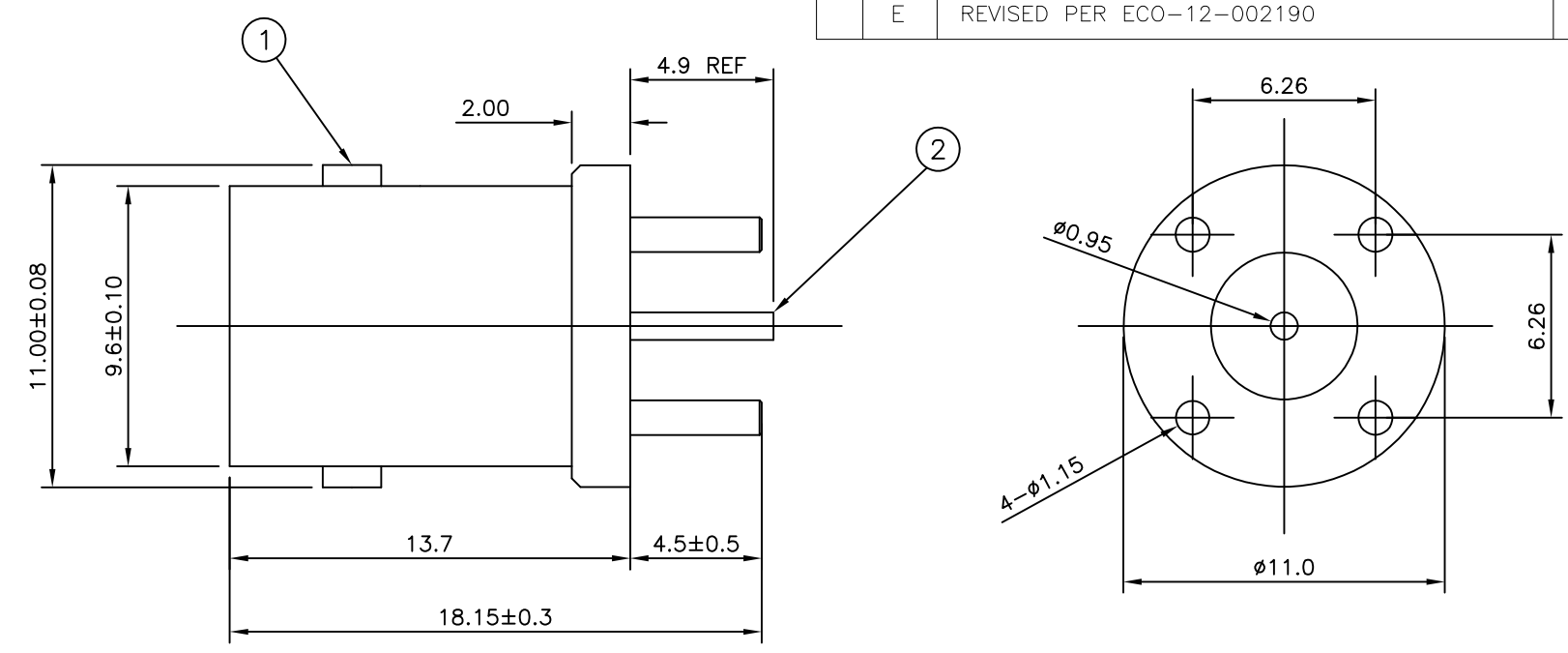


THIS DRAWING IS UNPUBLISHED. RELEASED FOR PUBLICATION SEP, 2004.
 © COPYRIGHT 2004 By - ALL RIGHTS RESERVED.

LOC	DIST	REVISIONS			
P	LTR	DESCRIPTION	DATE	DWN	APVD
E	B	D1	REVISED PER ECO-11-005033	31MAR11	RK HMR
E		E	REVISED PER ECO-12-002190	03FEB12	TITAN MARTIN

- NOTES**
- 1 100 TRAY PACK IN ACCORDANCE WITH AMP SPEC 107-3275
 - 2 SINGLE PACK IN ACCORDANCE WITH AMP SPEC 107-3275
 - 3 Au PLATING
 - 4 Ni PLATING
 - 5 FOR TECHNICAL DATA REFER TO YOUR LOCAL TE CONNECTIVITY SALES OFFICE
 - 6 ALL DIMENSIONS ARE NOMINAL FOR REFERENCE ONLY UNLESS OTHERWISE STATED



QUANTITY PER ASSY								PARTS LIST		
1	1	-	-	-	-	-	-	PTFE	INSULATOR	6
-	-	1	1	-	-	-	-	PTFE	INSULATOR	5
-	-	-	-	1	1	-	-	POLYMETHYLPENTENE	INSULATOR	4
-	-	-	-	-	-	1	1	POLYMETHYLPENTENE	INSULATOR	3
1	1	1	1	1	1	1	1	PHOS BRONZE	CONTACT	2
1	1	1	1	1	1	1	1	ZINC ALLOY	BODY	1
5--7	5--6	5--5	5--4	5--3	5--2	5--1	5--0			
△	△	△	△	△	△	△	△			

OBSOLETE

THIS DRAWING IS A CONTROLLED DOCUMENT.		DWN	11 Mar 09		TE Connectivity			
		CHK	11 Mar 09					
		APVD	11 Mar 09		NAME			
		PRODUCT SPEC		BNC STRAIGHT LOW PROFILE PCB SOCKET				
		APPLICATION SPEC		-				
		WEIGHT	-		SIZE	CAGE CODE	DRAWING NO	RESTRICTED TO
		CUSTOMER DRAWING		A300779		C-1634503		-
		SCALE		NTS		SHEET		1 OF 1
		REV		E				

Mouser Electronics

Authorized Distributor

Click to View Pricing, Inventory, Delivery & Lifecycle Information:

[TE Connectivity:](#)

[5-1634503-1](#)