

# Data sheet

## PM20BxxVBNN

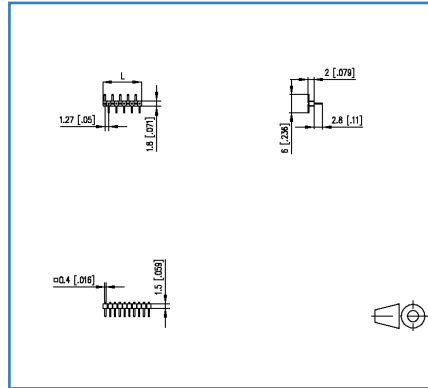
Page 1/4

P/N  
**PM20BXXVBNN**  
 xx=number of poles  
 2019/10/31  
 Version: R

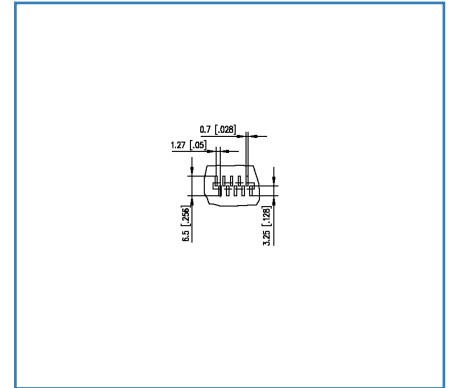
### Illustrations



Dimensional drawing



Drill pattern



See enlarged drawings at the end of document

### Product specification

- pin header, SMT solderable
- centerline 1.27 mm, direction of connection vertical 0°
- color black
- Tape & Reel packaging
- single row

**Data sheet**  
**PM20BxxVBNN**

Page 2/4

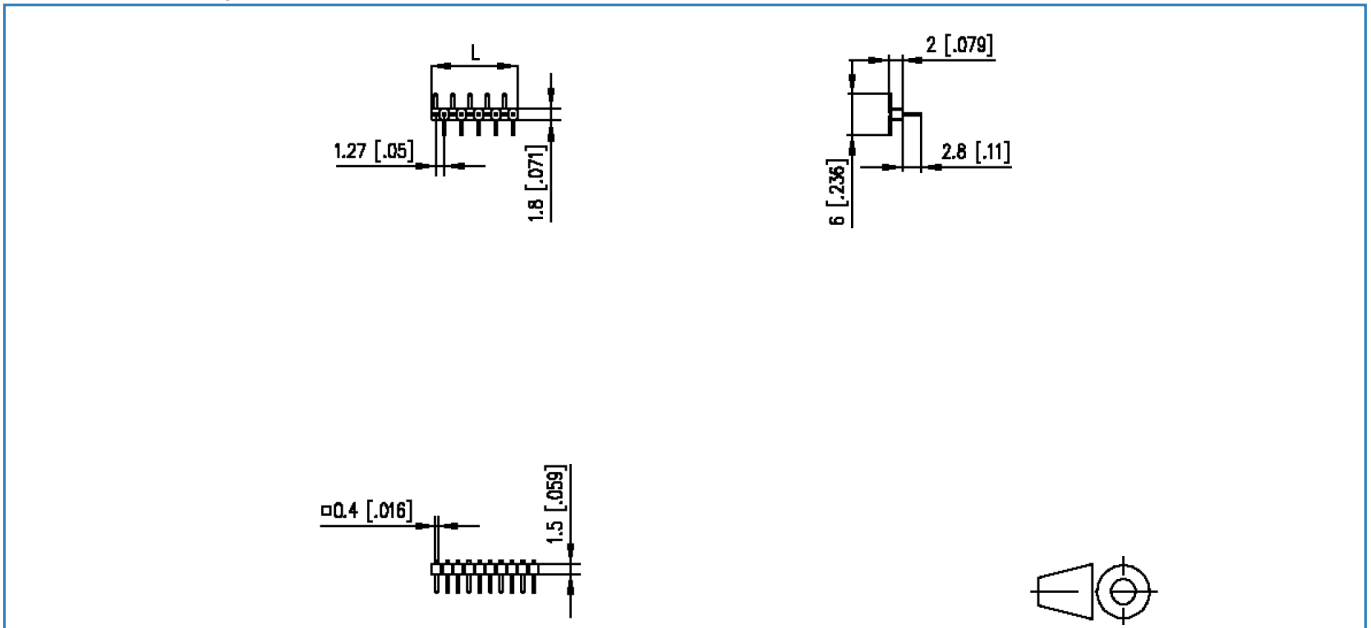
**P/N**  
**PM20BXXVBNN**  
**xx=number of poles**  
2019/10/31  
Version: R**Technical Data**

<b>General Data</b>	
min. number of poles	2
max. number of poles	50
protection category	IP00
<b>Material</b>	
insulating material	PE-HT
contact pin material	CuZn
contact pin surface	Ni + Au Flash
Glow-Wire Flammability GWFI	-
Glow-Wire Flammability GWIT	-
<b>Climatic Data</b>	
upper limit temperature	105 °C
lower limit temperature	-40 °C
<b>General</b>	
Tolerance	ISO 2768 -mH
Solderability	Acc. to IPC/JEDEC J-STD-020D-MSL 1



**Illustrations**

Dimensional drawing

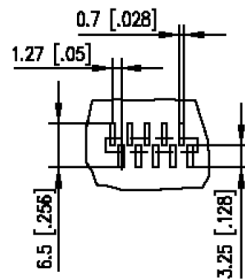


$L = (\text{pole size} - 1) \times \text{centerline} + 1.27 \text{ mm } [0.05]$

© 2019 METZ CONNECT - Technische Änderungen vorbehalten! Subject to modifications! Sous réserve de modifications techniques!

**Illustrations**

Drill pattern



© 2019 METZ CONNECT - Technische Änderungen vorbehalten! Subject to modifications! Sous réserve de modifications techniques!

