

G3VM-61PR1

MOS FET Relays

Smallest Class in market, USOP Package MOS FET Relays with Low Output Capacitance and ON Resistance ($C_xR=7\text{pF}\cdot\Omega$)

• Dielectric strength of 500Vrms between I/O.



NEW

Note: The actual product is marked differently from the image shown here.

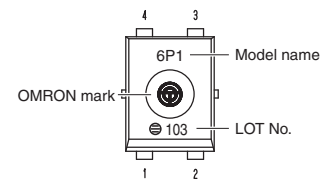
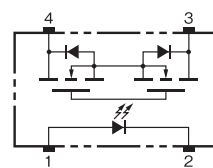
RoHS Compliant

⚠ Refer to "Common Precautions".

Application Examples

- Semiconductor test equipment
- Test & measurement equipment
- Communication equipment
- Data loggers

Terminal Arrangement/Internal Connections



Note: The actual product is marked differently from the image shown here.

List of Models

Package type	Contact form	Terminals	Load voltage (peak value) (See note.)	Model	Minimum package quantity
					Number per tape & reel
USOP4	1a (SPST-NO)	Surface-mounting terminals	60V	G3VM-61PR1	—
				G3VM-61PR1(TR05)	500
				G3VM-61PR1(TR)	1,500

Note 1. Ask you OMRON representative for orders under 1,500 pcs or 500 pcs.

2. Tape-cut USOPs are packaged without humidity resistance. Use manual soldering to mount them. Refer to common precautions.

3. The AC peak and DC value is given for the load voltages.

Absolute Maximum Ratings ($T_a = 25^\circ\text{C}$)

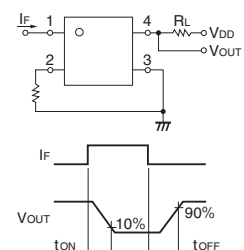
Item	Symbol	Rating	Unit	Measurement conditions	
Input	LED forward current	I_F	50	mA	
	LED forward current reduction rate	$\Delta I_F/^\circ\text{C}$	-0.5	mA/°C	$T_a \geq 25^\circ\text{C}$
	LED reverse voltage	V_R	5	V	
Connection temperature		T_J	125	°C	
Output	Load voltage (AC peak/DC)	V_{OFF}	60	V	
	Continuous load current (AC peak/DC)	I_o	120	mA	
	ON current reduction rate	$\Delta I_o/^\circ\text{C}$	-1.2	mA/°C	$T_a \geq 25^\circ\text{C}$
	Pulse ON current	I_{op}	360	mA	$t = 100\text{ms}$, Duty=1/10
	Connection temperature		T_J	125	°C
	Dielectric strength between I/O (See note 1.)		V_{I-O}	500	Vrms
Ambient operating temperature		T_a	-40~+85	°C	With no icing or condensation
Ambient storage temperature		T_{stg}	-40~+125	°C	With no icing or condensation
Soldering temperature		—	260	°C	10s

Note: 1. The dielectric strength between the input and output was checked by applying voltage between all pins as a group on the LED side and all pins as a group on the light-receiving side.

Electrical Characteristics ($T_a = 25^\circ\text{C}$)

Item	Symbol	Minimum	Typical	Maximum	Unit	Measurement conditions	
Input	LED forward voltage	V_F	1.0	1.15	1.3	V	$I_F = 10\text{mA}$
	Reverse current	I_R	—	—	10	μA	$V_R = 5\text{V}$
	Capacity between terminals	C_T	—	15	—	pF	$V = 0$, $f = 1\text{MHz}$
	Trigger LED forward current	I_{FT}	—	1.0	3	mA	$I_o = 100\text{mA}$
Maximum resistance with output ON		R_{ON}	—	10	15	Ω	$I_F = 5\text{mA}$, $I_o = 120\text{mA}$, $t < 1\text{s}$
Current leakage when the relay is open		I_{LEAK}	—	—	1	nA	$V_{OFF} = 60\text{V}$
Capacity between terminals		C_{OFF}	—	0.7	1.3	pF	$V = 0$, $f = 100\text{MHz}$, $t < 1\text{s}$
Capacity between I/O terminals		C_{I-O}	—	0.4	—	pF	$f = 1\text{MHz}$, $V_s = 0\text{V}$
Insulation resistance between I/O terminals		R_{I-O}	1000	—	—	M Ω	$V_{I-O} = 500\text{VDC}$, $R_oH \leq 60\%$
Turn-ON time		t_{ON}	—	0.04	0.2	ms	$I_F = 5\text{mA}$, $R_L = 200\Omega$, $V_{DD} = 20\text{V}$ (See note 2.)
Turn-OFF time		t_{OFF}	—	0.12	0.2	ms	

Note: 2. Turn-ON and Turn-OFF Times



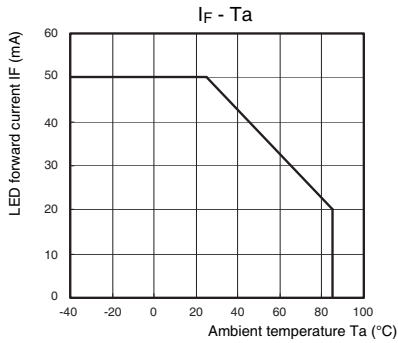
Recommended Operating Conditions

Use the G3VM under the following conditions so that the Relay will operate properly

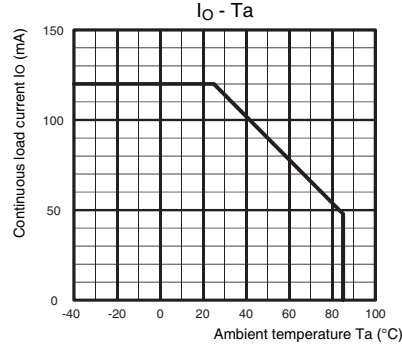
Item	Symbol	Minimum	Typical	Maximum	Unit
Load voltage (AC peak/DC)	V _{DD}	-	-	48	V
Operating LED forward current	I _F	5	7.5	20	mA
Continuous load current (AC peak/DC)	I _O	-	-	120	mA
Ambient operating temperature	T _a	-20	-	65	°C

Engineering Data

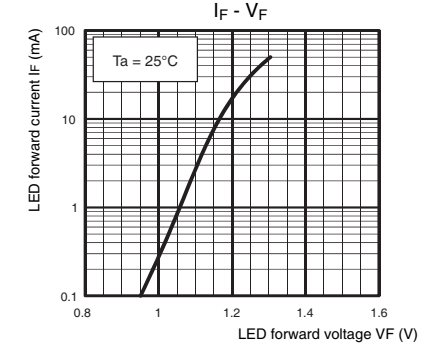
LED forward current vs. Ambient temperature



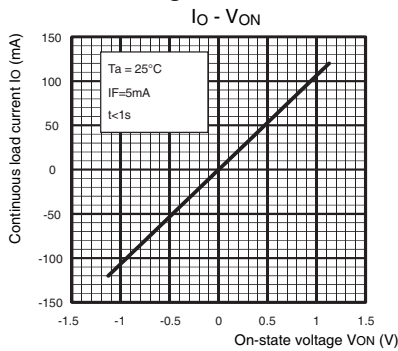
Continuous load current vs. Ambient temperature



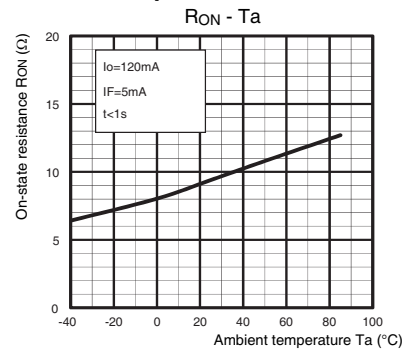
LED forward current vs. LED forward voltage



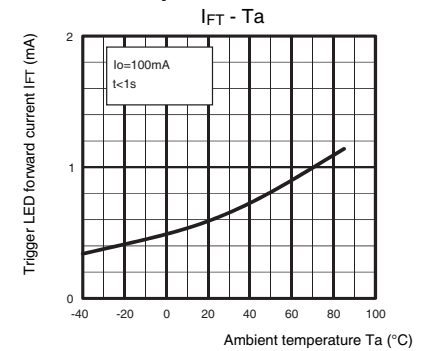
Continuous load current vs. On-state voltage



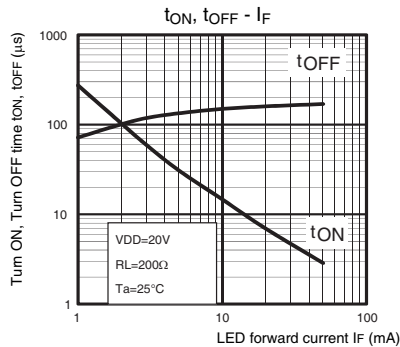
On-state resistance vs. Ambient temperature



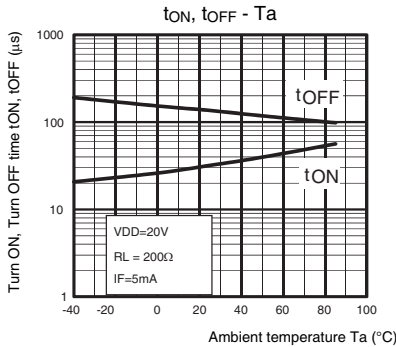
Trigger LED forward current vs. Ambient temperature



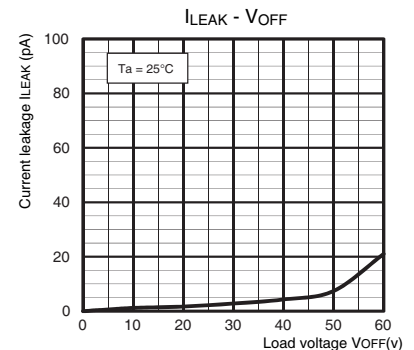
Turn ON, Turn OFF time vs. LED forward current



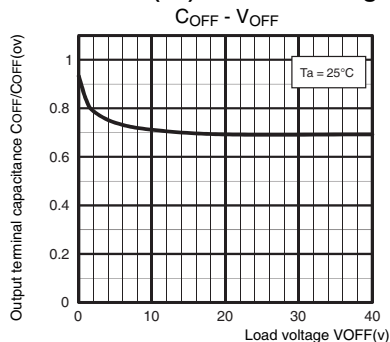
Turn ON, Turn OFF time vs. Ambient temperature



Current leakage vs. Load voltage



Output terminal capacitance COFF/COFF(ov) vs. Load voltage

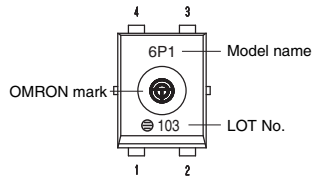


Safety Precautions

- Refer to "Common Precautions" for all G3VM models.

■ Appearance

USOP (Ultra Small Outline Package)
USOP4



Note: The actual product is marked differently from the image shown here.

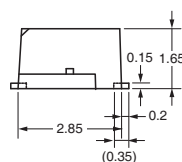
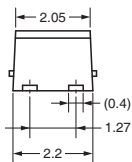
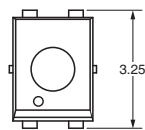
■ Dimensions

(Unit: mm)



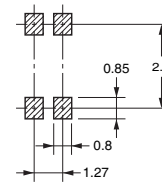
Surface-mounting Terminals

Weight: 0.03g



Actual Mounting Pad Dimensions

(Recommended Value, Top View)



Note: The actual product is marked differently from the image shown here.

- Application examples provided in this document are for reference only. In actual applications, confirm equipment functions and safety before using the product.
- Consult your OMRON representative before using the product under conditions which are not described in the manual or applying the product to nuclear control systems, railroad systems, aviation systems, vehicles, combustion systems, medical equipment, amusement machines, safety equipment, and other systems or equipment that may have a serious influence on lives and property if used improperly. Make sure that the ratings and performance characteristics of the product provide a margin of safety for the system or equipment, and be sure to provide the system or equipment with double safety mechanisms.

Note: Do not use this document to operate the Unit.

Mouser Electronics

Authorized Distributor

Click to View Pricing, Inventory, Delivery & Lifecycle Information:

Omron:

[G3VM-61PR1\(TR05\)](#) [G3VM-61PR1\(TR\)](#)