

# PTS645 Series 6 mm Tact Switches



## Features/Benefits

- Compact size 6 x 6 mm
- Variety of actuator lengths
- Choice of actuation force
- RoHS compliant and compatible

## Typical Applications

- Consumer products
- Instrumentation
- Computer products
- Industrial

## Specification

FUNCTION: Momentary action  
CONTACT ARRANGEMENT: SPST, N.O.  
TERMINALS: PC pins

## Mechanical

ACTUATION FORCE: 130 grams, 160 grams, 200 grams, 260 grams  
LIFE EXPECTANCY: 100,000 operations.

## Electrical

CONTACT RATING: 50 mA @ 12 V DC.  
DIELECTRIC STRENGTH: 250 V AC min.  
CONTACT RESISTANCE: 100 mΩ max. initial.  
INSULATION RESISTANCE: 10<sup>11</sup> Ω min.

## Environmental

OPERATING TEMPERATURE: -40°C to 85°C  
STORAGE TEMPERATURE: -40°C to 85°C

## Process

SOLDERING: Preheating to 100°C for 45 sec. max. Keep flux flush with top surface of PCB; do not apply to component side of PCB and area where terminals are located. Soldering to 255°C for 5 sec. max. Clean by brushing on solder surface. Do not clean switch with solvents.

## Packaging

Bulk packaging

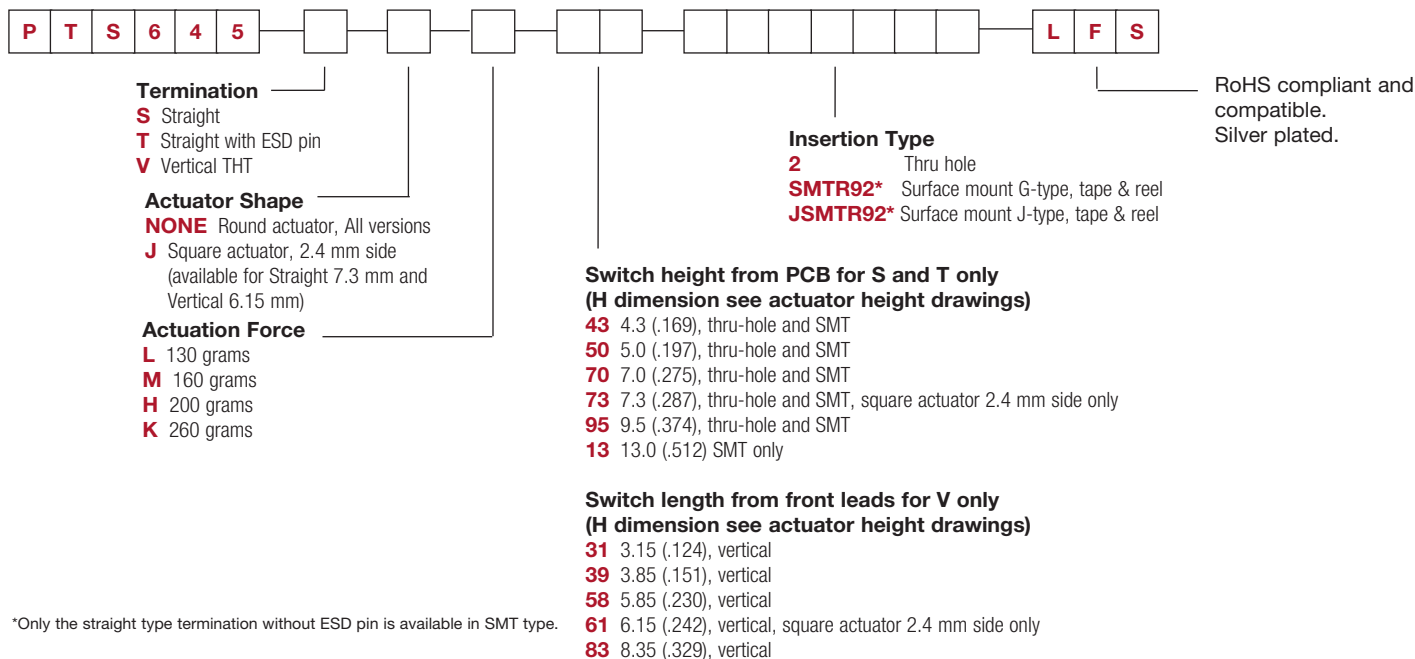
### Tape & reel for the SMT type:

Reels of 1,000 pieces for 4.3 and 5.0 mm height  
Reels of 700 pieces for 7.0 mm height  
Reels of 700 pieces for 7.3 mm height  
Reels of 500 pieces for 9.5 mm height  
Reels of 400 pieces for 13.0 mm height

**NOTE:** Specifications listed above are for switches with standard options.  
For information on specific and custom switches, consult Customer Service Center.

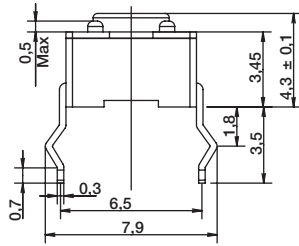
## How To Order

Our easy build-a-switch concept allows you to mix and match options to create the switch you need. To order, select desired option from each category and place it in the appropriate box.

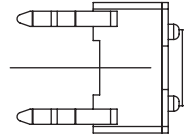
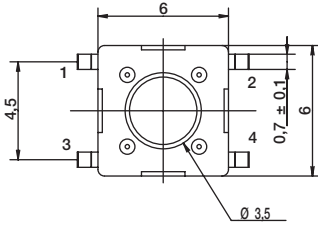
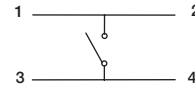


## TERMINATION

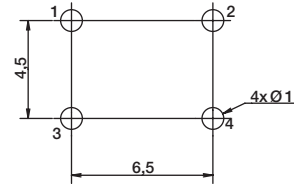
### S STRAIGHT



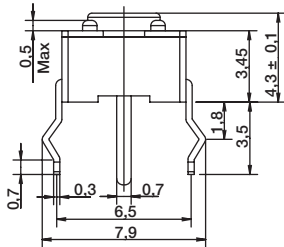
SCHEMATIC



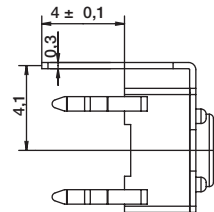
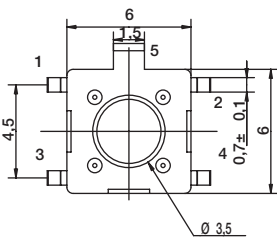
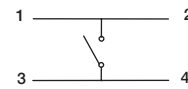
PCB LAYOUT



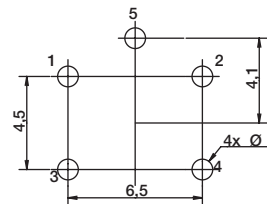
### T STRAIGHT WITH ESD PIN



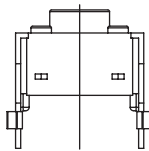
SCHEMATIC



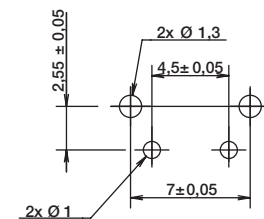
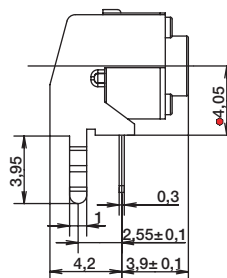
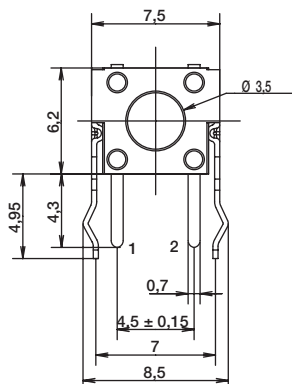
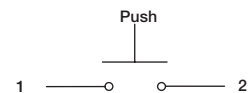
PCB LAYOUT



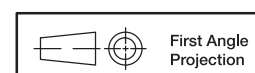
### V VERTICAL THT



SCHEMATIC



PCB LAYOUT



First Angle Projection

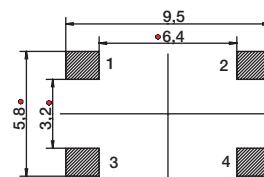
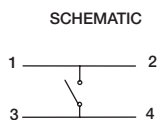
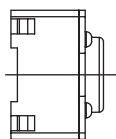
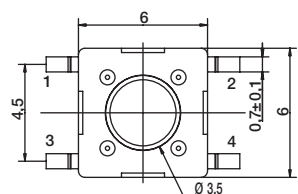
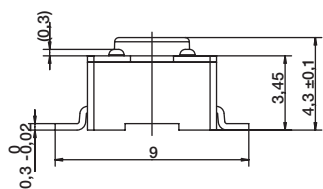
Dimensions are shown: mm  
Specifications and dimensions subject to change



# PTS645 Series 6 mm Tact Switches

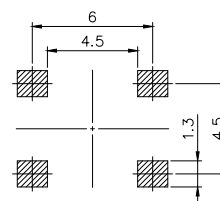
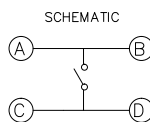
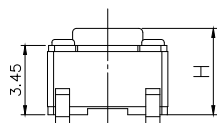
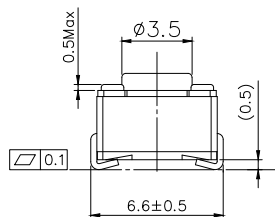
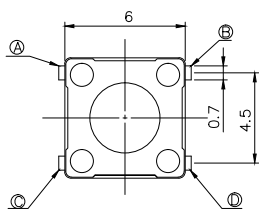
## TERMINATION

### SMT G Type



PCB LAYOUT

### SMT J Type



PCB LAYOUT

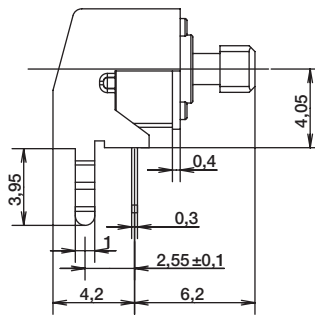
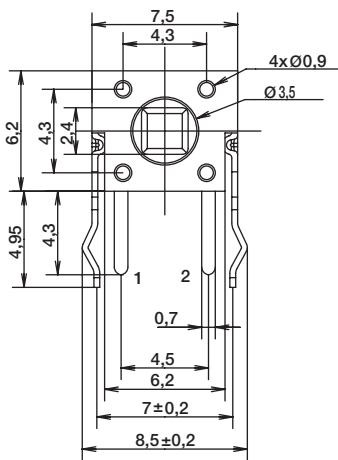
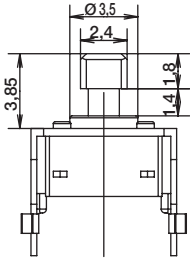


Dimensions are shown: mm  
Specifications and dimensions subject to change

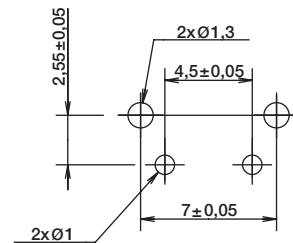
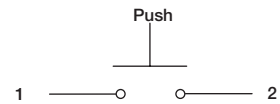
## ACTUATOR SHAPE

### J SQUARE ACTUATOR

#### VERTICAL THT - FOR 6.15MM LENGTH ONLY

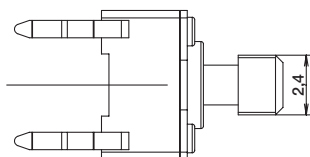
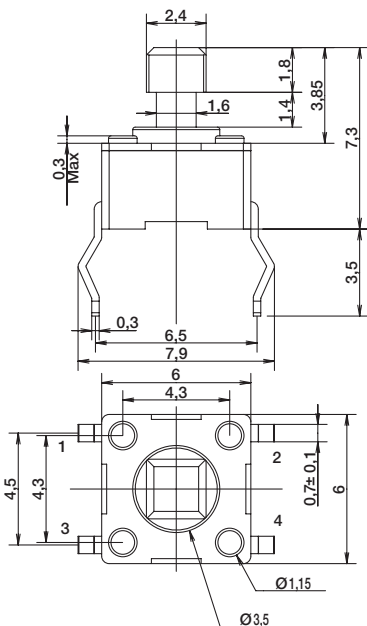


#### SCHEMATIC

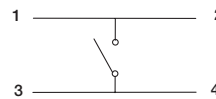


#### RECOMMENDED PCB LAYOUT

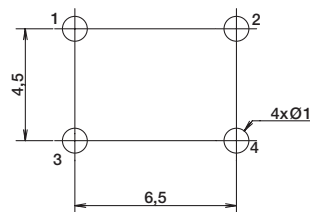
#### VERTICAL THT - FOR 7.3MM HEIGHT ONLY



#### SCHEMATIC



#### RECOMMENDED PCB LAYOUT



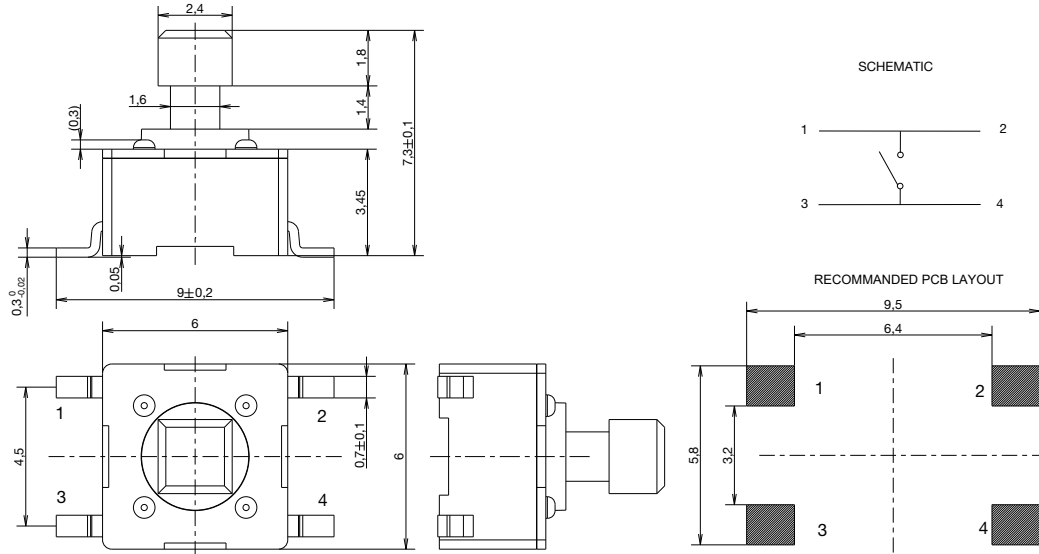
First Angle  
Projection



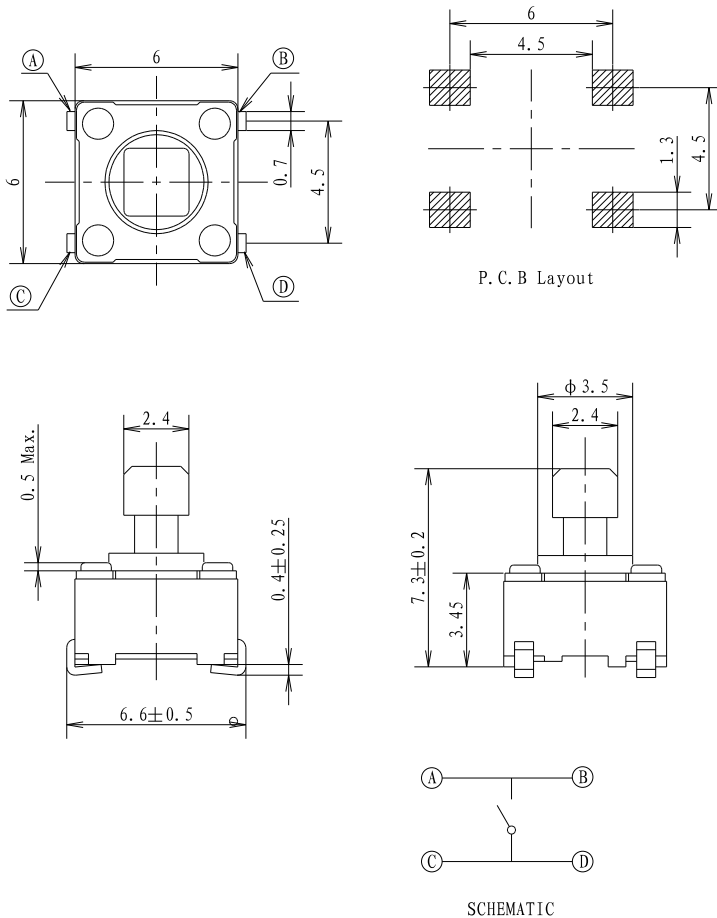
# PTS645 Series 6 mm Tact Switches

## ACTUATOR SHAPE

### STRAIGHT SMT G TYPE - FOR 7.3MM HEIGHT ONLY



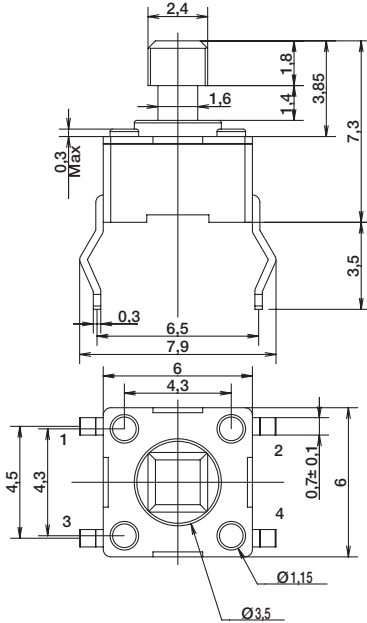
### STRAIGHT SMT J TYPE - FOR 7.3MM HEIGHT ONLY



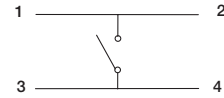
Dimensions are shown: mm  
Specifications and dimensions subject to change

## ACTUATOR SHAPE

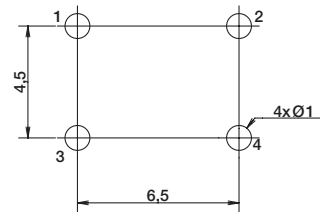
### VERTICAL THT - FOR 7.3MM HEIGHT ONLY



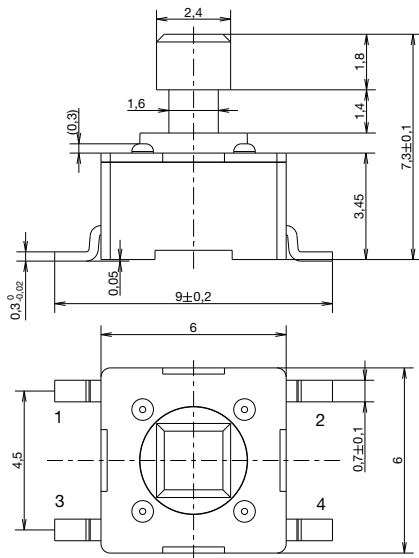
### SCHEMATIC



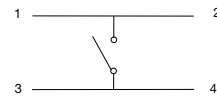
### RECOMMENDED PCB LAYOUT



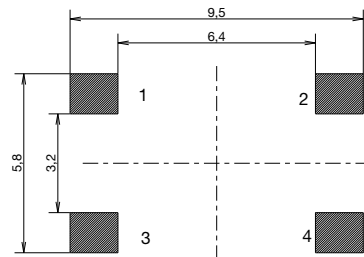
### STRAIGHT SMT - FOR 7.3MM HEIGHT ONLY



### SCHEMATIC



### RECOMMENDED PCB LAYOUT



Dimensions are shown: mm

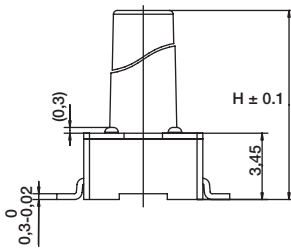
Specifications and dimensions subject to change

# PTS645 Series 6 mm Tact Switches

## ACTUATION FORCE

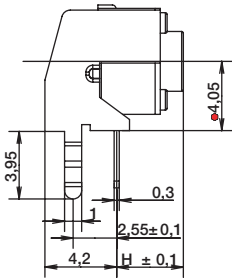
OPTION CODE	FORCE
<b>L</b>	130 grams Black
<b>M</b>	160 grams Blue
<b>H</b>	200 grams Gray
<b>K</b>	260 grams Red

## ACTUATOR HEIGHT



Switch height from PCB for S and T only

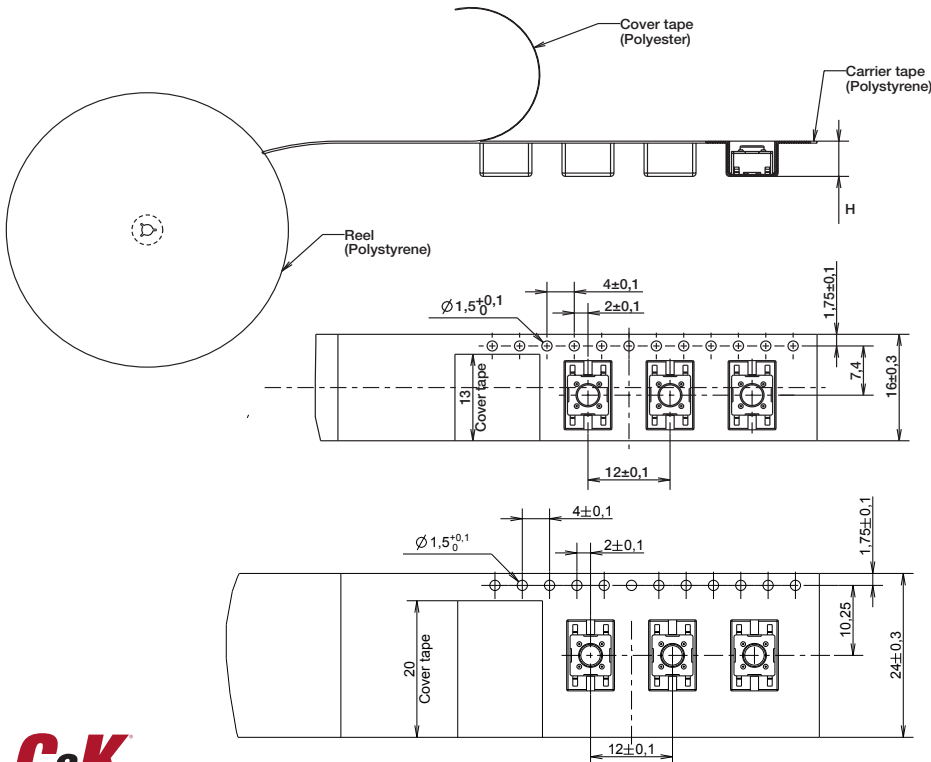
OPTION CODE	DIMENSION H	TERMINATION	SCHEMATIC	
			Without EMC pin	With EMC pin
<b>43</b>	4,3 (.169)	Thru-hole and SMT		
<b>50</b>	5,0 (.197)	Thru-hole and SMT		
<b>70</b>	7,0 (.275)	Thru-hole and SMT		
<b>95</b>	9,5 (.374)	Thru-hole and SMT		
<b>13</b>	13,0 (.512)	SMT		



Switch length from front leads for V only

OPTION CODE	DIMENSION H	TERMINATION	SCHEMATIC	
			Without EMC pin	With EMC pin
<b>31</b>	3,15 (.124)	Vertical		
<b>39</b>	3,85 (.151)	Vertical		
<b>58</b>	5,85 (.230)	Vertical		
<b>83</b>	8,35 (.329)	Vertical		

## TAPE & REEL FOR SMT G TYPE VERSIONS



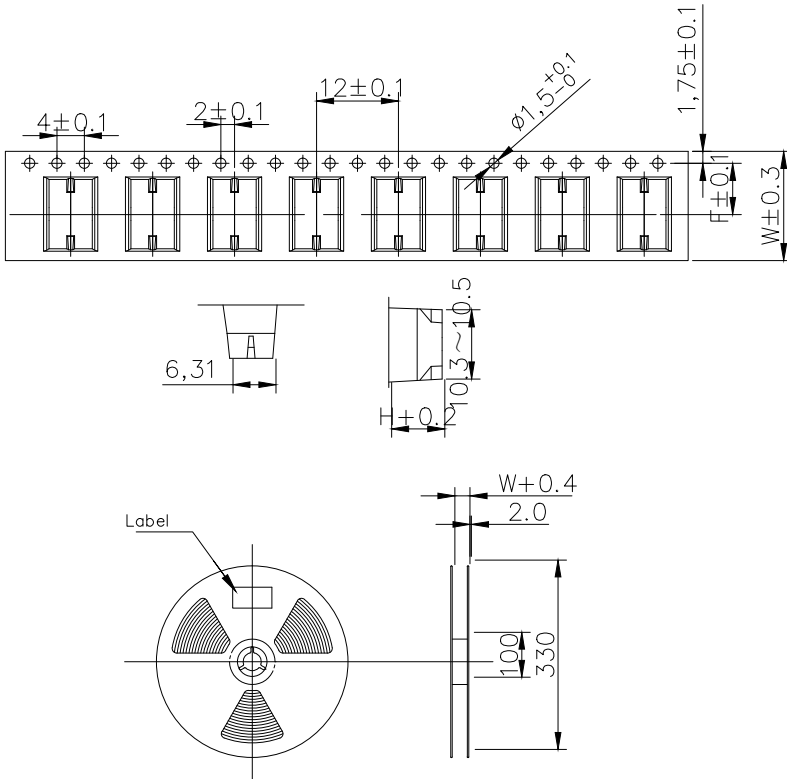
OPTION CODE	WIDTH TAPE	POCKET HEIGHT
<b>43</b>	16 ± 0.3	5.3
<b>50</b>	16 ± 0.3	5.3
<b>70</b>	16 ± 0.3	7.3
<b>73</b>	16 ± 0.3	7.6
<b>95</b>	24 ± 0.3	10.3
<b>13</b>	24 ± 0.3	13.3



Dimensions are shown: mm  
Specifications and dimensions subject to change

# PTS645 Series 6 mm Tact Switches

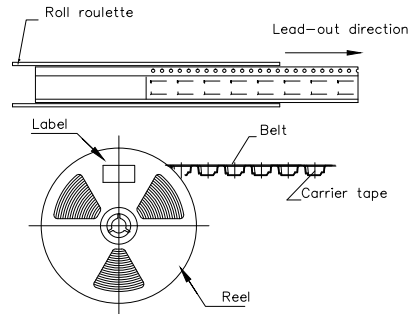
## TAPE & REEL FOR SMT J TYPE VERSIONS



Tape specifications

Product height (h)mm	Carrier tape width (W)mm	Center distance of carrier tape (F)mm	pcs/reel
4.3	16	7.5	1000
5.0	16	7.5	1000
7.0	16	7.5	700
7.3	16	7.5	700
9.5	24	11.5	500
11	24	11.5	500
13	24	11.5	500

Note: The disc rotates counterclockwise. According to the packing shown in the figure, the braid must not be twisted to prevent product deformation;





# Mouser Electronics

Authorized Distributor

Click to View Pricing, Inventory, Delivery & Lifecycle Information:

## C&K Switches:

[PTS645SK13SMTR92LFS](#) [PTS645SK95SMTR92LFS](#) [PTS645SM95SMTR92LFS](#) [PTS645SM13SMTR92LFS](#)  
[PTS645SM70SMTR92LFS](#) [PTS645SK70SMTR92LFS](#) [PTS645SK43SMTR92LFS](#) [PTS645SM43SMTR92LFS](#)  
[PTS645SH43SMTR92LFS](#) [PTS645SL50SMTR92LFS](#) [PTS645SM50SMTR92LFS](#) [PTS645SH50SMTR92LFS](#)  
[PTS645SL43SMTR92LFS](#) [PTS645SK50SMTR92LFS](#) [PTS645SL70SMTR92LFS](#) [PTS645SL95SMTR92LFS](#)  
[PTS645SH70SMTR92LFS](#) [PTS645SL13SMTR92LFS](#) [PTS645SR13SMTR92LFS](#) [PTS645SH13SMTR92LFS](#)  
[PTS645SH95SMTR92LFS](#)