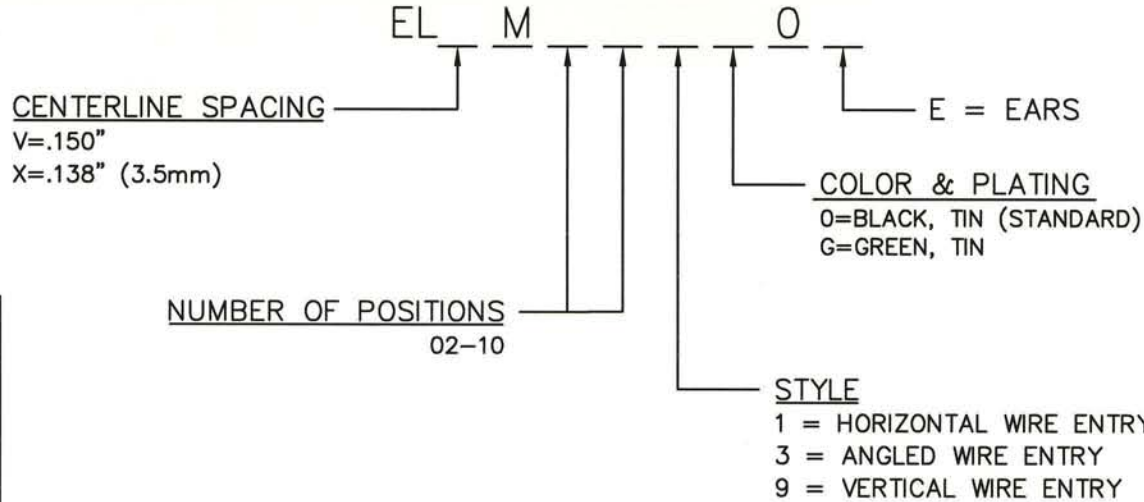


# ELVM/ELXM SERIES PART NUMBERING SCHEME

REV	ECN	APPD
-	3624	JEC 1-19-99
A	3729	JEC 4/12/99
B	3865	JEC 11/9/99
C	5742	RN 12/28/05



**RU**  
RATINGS

CURRENT - 12A  
VOLTAGE - 300V  
U.L. FILE NO. E83421

**SP**  
RATINGS

CURRENT - 12A  
VOLTAGE - 300V  
CSA FILE NO. LR69703

DIN VDE 0627:1986  
DIN VDE 0110-1:1989  
EN 60947-1:1991  
EN 60947-7-1:1992

CURRENT - 12A  
VOLTAGE - 300V  
TUV FILE NO. 20396

**INSTALLATION RECOMMENDATIONS:**  
WIRE RANGE: AWG #16-28, STRANDED OR SOLID  
WIRE STRIP LENGTH: .250"  
TIGHTENING TORQUE: 2.2 LB-IN.

CONSULT PCD FOR PART NO. AND AVAILABILITY OF FOLLOWING OPTIONS:

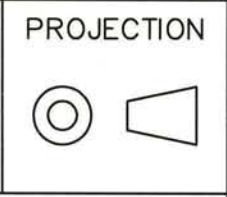
- \* CUSTOM COLORS
- \* CUSTOM MARKING
- \* CUSTOM KEYING
- \* SELECTIVE CONTACT LOADING

**MATERIALS:**  
HOUSING: PA 4/6, UL 94 V-0  
CONTACT: BRASS, OPTIONAL FINISH

MAX OPERATING TEMPERATURE: 125°C  
MAX INTRUSIVE SOLDER TEMP: 250°C

**DIMENSIONS**  
ANSI Y14.5M  
UNITS: INCHES  
ACAD FILE

**TOLERANCES**  
.XX ±.01  
.XXX ±.005  
ANGLES ±2°



**Amphenol Pcd**  
SPECIFICATION DRAWING

ENGR  
I. QUINN 12/21/98

**TITLE**

ELV/ELX SERIES  
TERMINAL BLOCK

ORIGINAL  
STAMPED  
IN RED

THIS DOCUMENT CONTAINS PROPRIETARY INFORMATION WHICH IS THE CONFIDENTIAL PROPERTY OF AMPHENOL PCD INC. PEABODY, MA

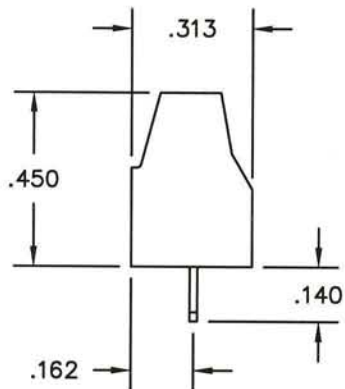
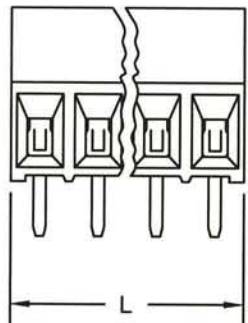
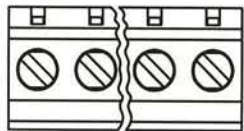
CHKD  
J. CAHALY 1/19/99

APPD  
J. CAHALY 1/19/99

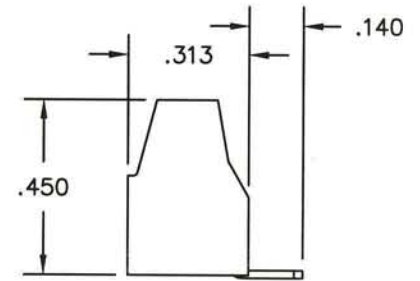
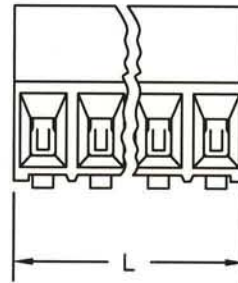
SIZE	DWG NO.	REV
A	ELVM02100	C
CODE: 58982	SCALE: NONE	SHEET 1 OF 2

L=NUM OF POS X CL SPACING

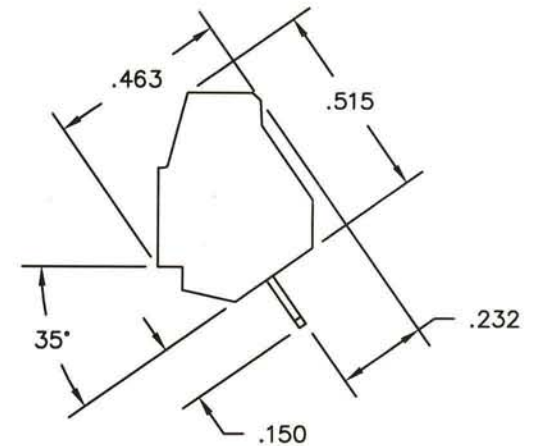
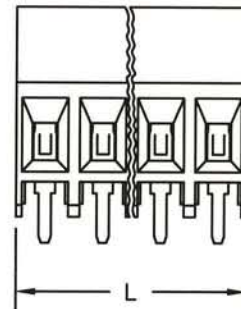
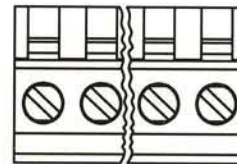
HORIZONTAL



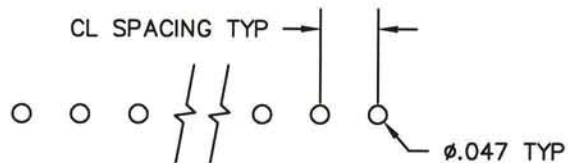
VERTICAL



ANGLED



PRINTED CIRCUIT BOARD CONFIGURATION



RECOMMENDED PCB THICKNESS: .062±.008

SIZE	DWG NO.	DOC REV
A	ELVM02100	C
CODE: 58982	SCALE: NONE	SHEET 2 OF 2

# Mouser Electronics

Authorized Distributor

Click to View Pricing, Inventory, Delivery & Lifecycle Information:

[Amphenol:](#)

[ELVM10300](#) [ELVM10900](#)