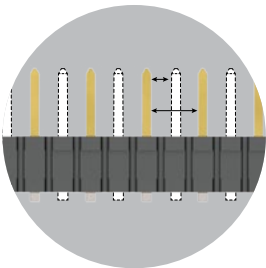


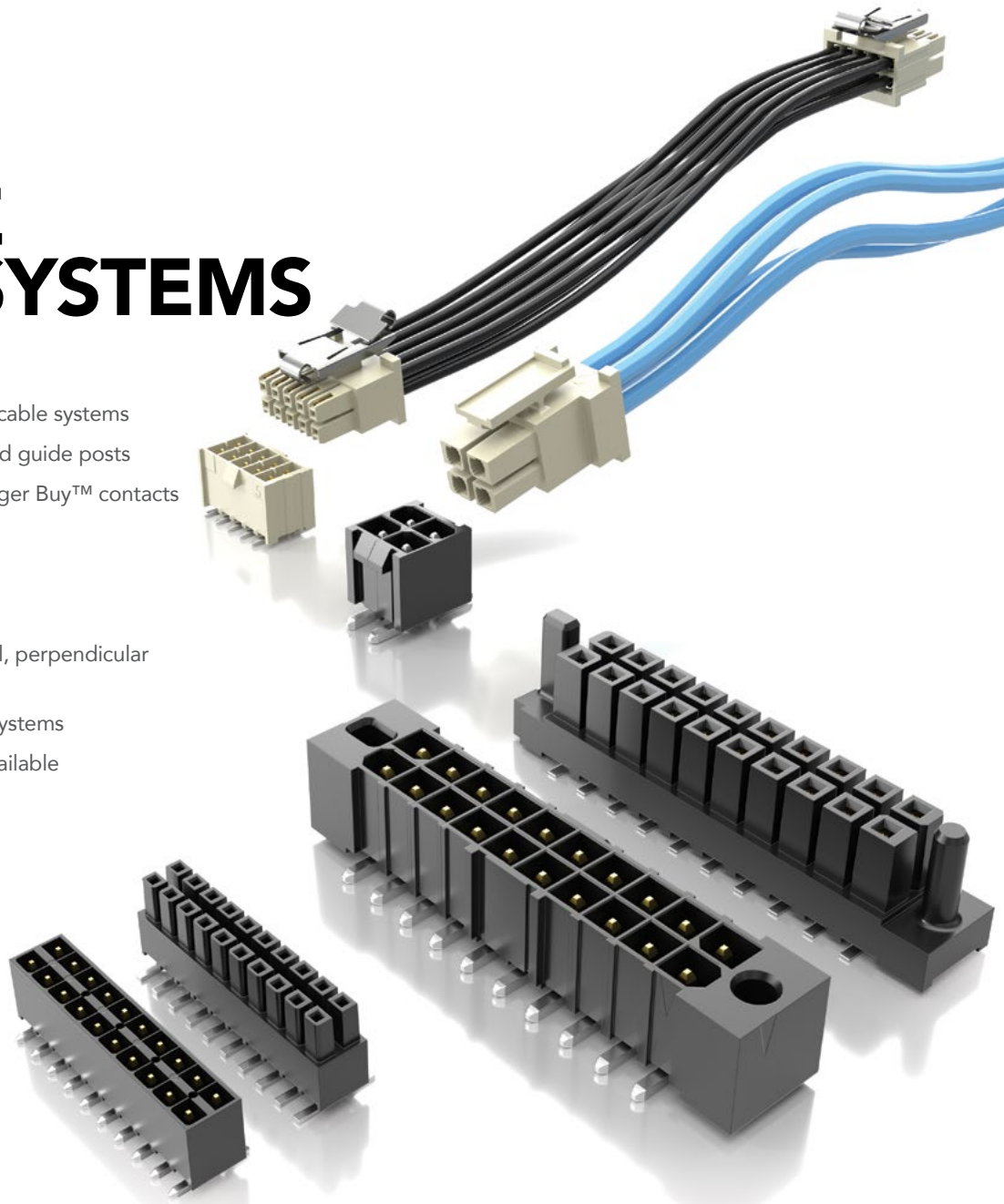
FLEXIBLE POWER SYSTEMS

FEATURES & BENEFITS

- Board-to-board and discrete wire cable systems
- Power Mate® system with polarized guide posts
- Mini Mate® system with reliable Tiger Buy™ contacts
- Individually shrouded contacts
- Elevated stack heights
- Optional polarization
- Vertical and right-angle for parallel, perpendicular and coplanar applications
- Rugged metal or plastic latching systems
- Cable components and tooling available



Selectively loading contacts achieves customer specific creepage and clearance requirements.



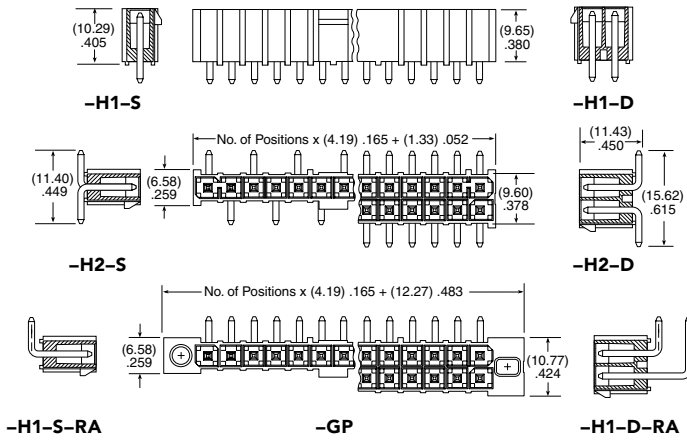
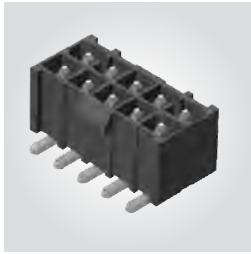
KEY SPECIFICATIONS

SERIES	IPT1/IP51	IPBT/IPBS	HPM/HPW/HPF	FWJ/HFWJ/FHP
PITCH	(2.54 mm) .100"	(4.19 mm) .165"	(5.08 mm) .200"	(3.96 mm) .156"
CCC (1 PIN)*	5.9 A	10.3 A /pin (2 pins powered)	16.6 A	13.1 A
CCC (2 PINS)*	4.8 A	8.4 A /pin (4 pins powered)	14.4 A	11.2 A
CCC (3 PINS)*	4.1 A	7.6 A /pin (6 pins powered)	13.2 A	10.3 A
CREEPAGE	(2.54 mm) .100"	(4.27 mm) .168"	(3.94 mm) .155"	(3.92 mm) .154"
CLEARANCE	(1.91 mm) .075"	(3.05 mm) .120"	(3.94 mm) .155"	(2.82 mm) .111"
VAC	775	400	850	600
VDC	1095	565	1200	845
CYCLES	1000 (MFG Tested)	100	100	100

(4.19 mm) .165" PITCH • ISOLATED POWER CONNECTOR SET

IPBT	1	NO. OF POSITIONS PER ROW	LEAD STYLE	PLATING OPTION	ROW OPTION	OPTIONS
		02, 03, 04, 05, 08, 10 15 (-D Only) (Standard Sizes)	-H1 = Through-hole -H2 = Surface Mount	-T = Matte Tin	-S = Single Row -D = Double Row	-RA = Right-angle (Lead Style -H1 only) -GP = Guide Post Holes (Not available with -K) -K = Keyed Polarization (not available with -GP option, is required callout if -GP not called out)

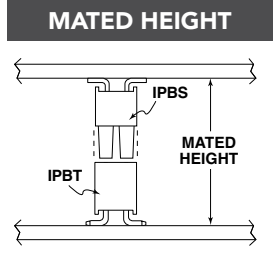
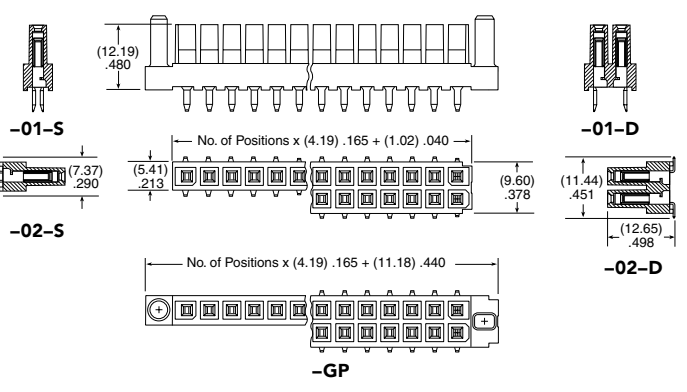
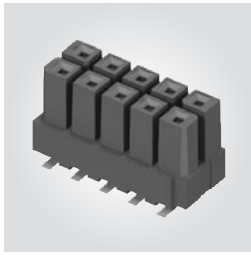
IPBT
Board Mates:
IPBS
Cable Mates:
PMSD, PMSS



IPBT/IPBS	
PINS POWERED	CURRENT RATING (PER CONTACT)
2	10.3 A
4	8.4 A
6	7.6 A
8	7.1 A
30	6.0 A

IPBS	1	NO. OF POSITIONS PER ROW	LEAD STYLE	PLATING OPTION	ROW OPTION	OPTION
		02, 03, 04, 05, 08, 10 15 (-D Only) (Standard Sizes)	-01 = Standard Power -02 = Standard Power Surface Mount	-T = Matte Tin	-S = Single Row -D = Double Row	-GP = Guide Post

IPBS
Board Mates:
IPBT



IPBT/IPBS LEAD STYLE	MATED HEIGHT*
H1/-01	(15.25) .600
-H2/-02	(16.84) .663

Note:
Some lengths, styles and options are non-standard, non-returnable.

View complete specifications at: samtec.com?IPBT & samtec.com?IPBS

Mouser Electronics

Authorized Distributor

Click to View Pricing, Inventory, Delivery & Lifecycle Information:

Samtec:

[IPBS-102-02-T-D-GP](#) [IPBS-104-02-T-D](#) [IPBS-110-01-T-D-GP](#) [IPBS-108-01-T-D](#) [IPBS-104-01-T-S](#) [IPBS-102-02-T-D](#)
[IPBS-102-01-T-D](#) [IPBS-104-01-T-D-GP](#) [IPBS-115-01-T-D](#) [IPBS-105-01-T-D](#) [IPBS-110-01-T-D](#) [IPBS-103-01-T-D](#)
[IPBS-102-01-T-S](#) [IPBS-105-02-T-D](#) [IPBS-102-01-T-D-GP](#) [IPBS-105-01-T-S](#) [IPBS-103-01-T-S-GP](#) [IPBS-105-01-T-D](#)
[GP](#) [IPBS-104-01-T-D](#) [IPBS-115-01-T-D-GP](#) [IPBS-104-01-T-S-GP](#) [IPBS-108-01-T-D-GP](#) [IPBS-103-01-T-D-GP](#) [IPBS-](#)
[105-01-T-S-GP](#) [IPBS-107-02-T-S](#) [IPBS-114-01-T-D](#) [IPBS-106-01-T-D](#) [IPBS-112-02-T-D](#) [IPBS-112-02-T-D-GP](#) [IPBS-](#)
[113-01-T-D](#) [IPBS-113-01-T-D-GP](#) [IPBS-109-01-T-D-GP](#) [IPBS-111-01-T-D-GP](#) [IPBS-112-01-T-D-GP](#) [IPBS-109-01-T-](#)
[D](#) [IPBS-111-01-T-D](#) [IPBS-110-02-T-D-GP](#) [IPBS-107-01-T-D](#) [IPBS-115-02-T-D-GP](#) [IPBS-106-01-T-D-GP](#) [IPBS-107-](#)
[01-T-D-GP](#) [IPBS-108-02-T-D-GP](#) [IPBS-103-02-T-D-GP](#) [IPBS-105-02-T-D-GP](#) [IPBS-109-02-T-D-GP](#) [IPBS-112-01-T-D](#)
[IPBS-115-02-T-D](#) [IPBS-110-02-T-D](#) [IPBS-114-01-T-D-GP](#) [IPBS-104-02-T-D-GP](#) [IPBS-105-01-TM-D](#) [IPBS-106-02-](#)
[T-D](#) [IPBS-108-02-T-D](#) [IPBS-110-01-T-S-GP](#) [IPBS-104-01-TM-D-GP](#) [IPBS-115-01-TM-D](#) [IPBS-106-02-T-D-GP](#) [IPBS-](#)
[103-02-T-D](#) [IPBS-115-01-TM-D-GP](#) [IPBS-115-02-TM-D](#) [IPBS-102-01-T-S-GP](#) [IPBS-102-02-T-S](#) [IPBS-106-01-T-S](#)
[IPBS-106-01-T-S-GP](#) [IPBS-103-01-T-S](#) [IPBS-107-01-T-S](#) [IPBS-108-01-T-S](#) [IPBS-103-02-T-S](#) [IPBS-102-02-T-S-GP](#)
[IPBS-105-02-T-S-GP](#) [IPBS-104-02-T-S](#) [IPBS-104-02-T-S-GP](#) [IPBS-105-02-T-S](#) [IPBS-108-02-T-S](#) [IPBS-103-01-TM-D](#)
[IPBS-112-01-TM-D-GP](#) [IPBS-108-01-TM-D](#) [IPBS-110-01-TM-D](#) [IPBS-102-01-TM-S](#) [IPBS-103-02-T-S-GP](#) [IPBS-](#)
[104-01-TM-D](#) [IPBS-110-01-TM-D-GP](#) [IPBS-107-01-TM-D-GP](#) [IPBS-108-01-T-S-GP](#) [IPBS-104-02-TM-D](#) [IPBS-110-](#)
[02-T-S](#) [IPBS-108-02-T-S-GP](#)