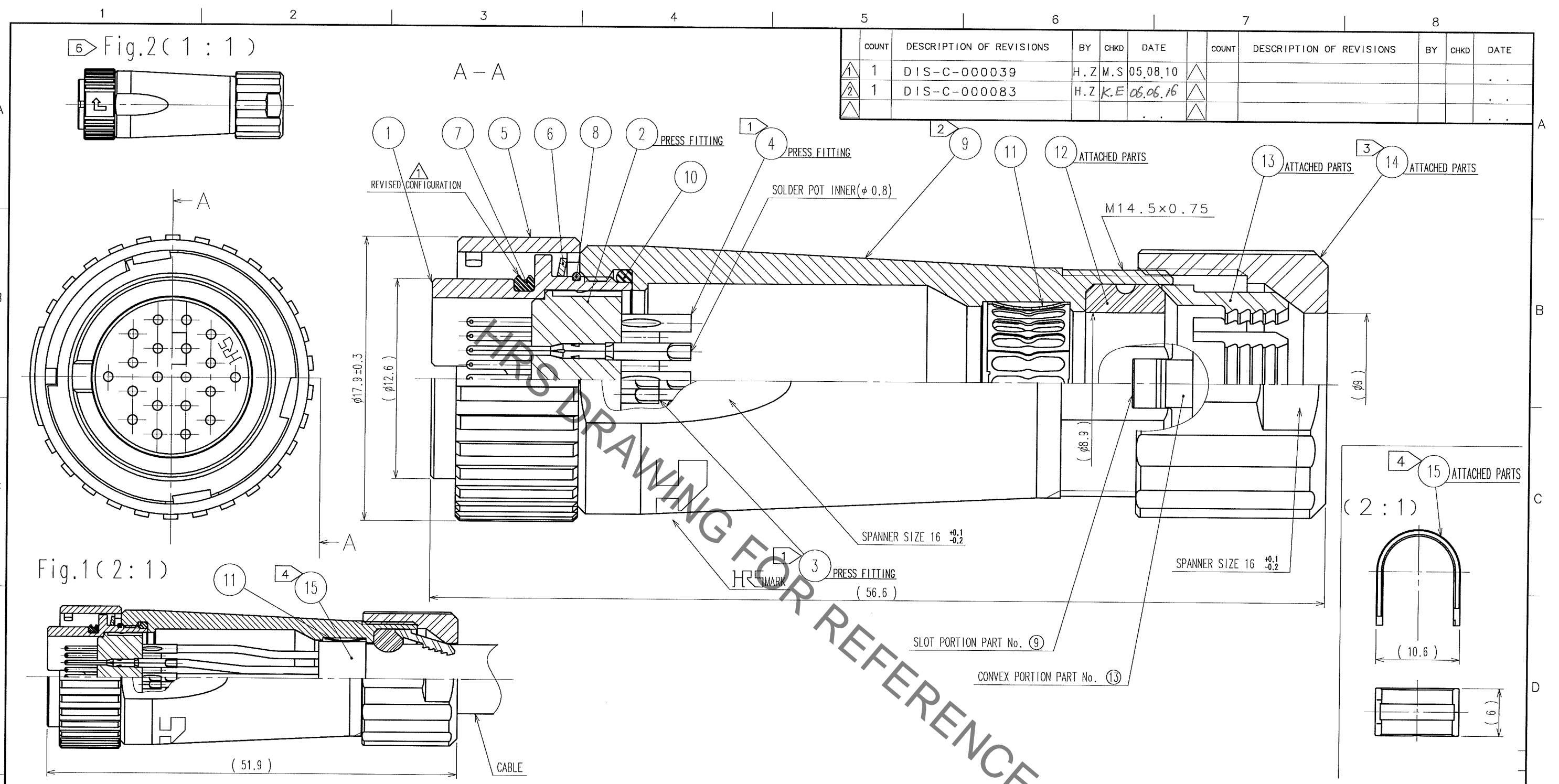


Jan.1.2022 Copyright 2022 HIROSE ELECTRIC CO., LTD. All Rights Reserved.
In case of consideration for using Automotive equipment / device which demand high reliability, kindly contact our sales window correspondents.



COUNT	DESCRIPTION OF REVISIONS	BY	CHKD	DATE	COUNT	DESCRIPTION OF REVISIONS	BY	CHKD	DATE
1	DIS-C-000039	H.Z	M.S	05.08.10					
1	DIS-C-000083	H.Z	K.E	06.06.16					

- NOTES
- ① PLATING(REF.NO.③,④)
CONTACT AREA : GOLD 0.2μm min
OTHERS : GOLD AND NICKEL
UNDER PLATING : NICKEL 2μm min
 - ② THE RECOMMENDED CLAMP TORQUE OF REF.NO.⑨ TO BE 1.5 TO 2N·m.
THREAD LOCKER TO THE THREADED PORTION OF REF.NO.① IS RECOMMENDED TO PREVENT REF.NO.⑨ FROM LOOSING.
RECOMMENDED THREAD LOCKER:LOCTITE 271, HENKEL JAPAN LTD.
 - ③ THE RECOMMENDED CLAMP TORQUE OF REF.NO.⑭ TO BE 1 TO 1.5N·m.
THREAD LOCKER AND LOCK PRIMER TO THE THREADED PORTION M14.5×0.75 OF REF.NO.⑨ IS RECOMMENDED TO PREVENT REF.NO.⑭ FROM LOOSING.
RECOMMENDED THREAD LOCKER AND LOCK PRIMER : LOCTITE 271, LOCK PRIMER 7649, HENKEL JAPAN LTD.
 - ④ FASTEN REF.NO.⑮ TO THE CABLE WITH THE CABLE CRIMPING TOOL.
AND MAKE REF.NO.⑮ CONTACT WITH REF.NO.⑪(REFER TO Fig.1).
REFER TO THE TECHNICAL SPECIFICATION ATAD-C0099 FOR DETAILS.
APPLICABLE CABLE CRIMPING TOOL : LF-TC-01 (CL150-0234-6)
 - ⑤ APPLICABLE CABLE ASSEMBLY FIXTURE : LF13BP-T01 (CL150-0237-4)
CABLE ASSEMBLY FIXTURE IS USED AS A RECEPTACLE STAND OF EXTRACT AND THE PART NUMBER ① OF AN ASSEMBLY.
 - ⑥ Fig.2 SHOWS THE APPEARANCE AFTER ASSEMBLY.
 - ⑦ ROTATION EXAMPLES OF REF.NOS.⑤,⑨ AND ⑭ TO ① ARE SHOWN.

8	STAINLESS STEEL				
7	CHLOROPRENE RUBBER (BLACK)		15	BRASS	NICKEL PLATING
6	STAINLESS STEEL		14	PPS	(NATURAL,BROWN) UL94V-0
5	ZINC ALLOY	NICKEL PLATING	13	POLYAMIDE	(NATURAL,MILKY WHITE) UL94V-0
4	COPPER ALLOY	①	12	CHLOROPRENE RUBBER (BLACK)	
3	COPPER ALLOY	①	11	PHOSPHOR BRONZE	NICKEL PLATING
2	PPS (BLACK)	UL94V-0	10	CHLOROPRENE RUBBER (BLACK)	
1	ZINC ALLOY	NICKEL PLATING	9	ZINC ALLOY	NICKEL PLATING
NO.	MATERIAL	FINISH, REMARKS	NO.	MATERIAL	FINISH, REMARKS

CODE NO.(OLD) CL		DRAWN K, ABE	DESIGNED H, ZEMBA	CHECKED M, SATO	APPROVED M, YOSHIDA	RELEASED
		'05.05.11	'05.05.13	'05.05.13	'05.05.16	
DRAWING NO. EDC3-114374		PART NO. LF13WBP-20P				
SCALE 4 : 1		CODE NO. CL136-0010-2				1/1
UNITS mm		HRS HIROSE ELECTRIC CO., LTD				

TO
R
F



Mouser Electronics

Authorized Distributor

Click to View Pricing, Inventory, Delivery & Lifecycle Information:

[Hirose Electric:](#)

[LF13WBP-20P](#)