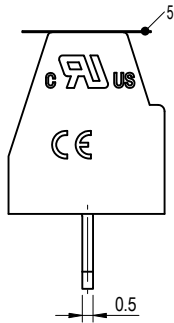
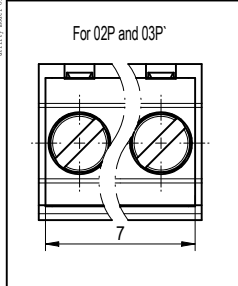
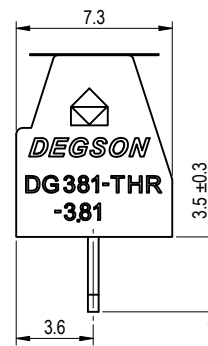
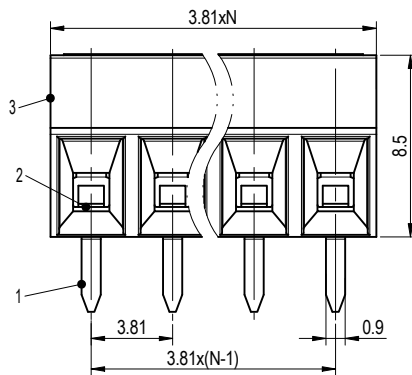
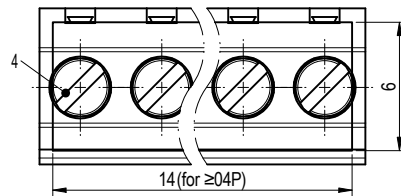
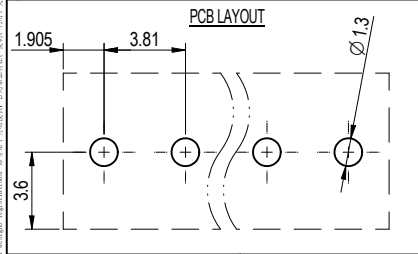
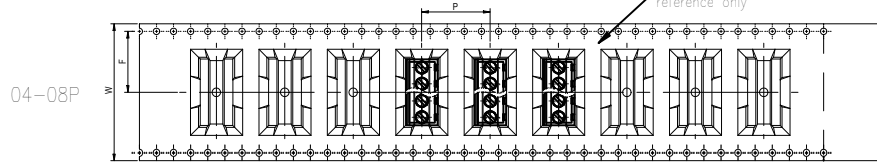
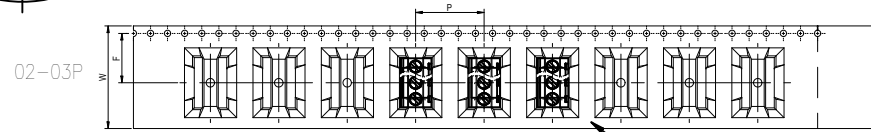
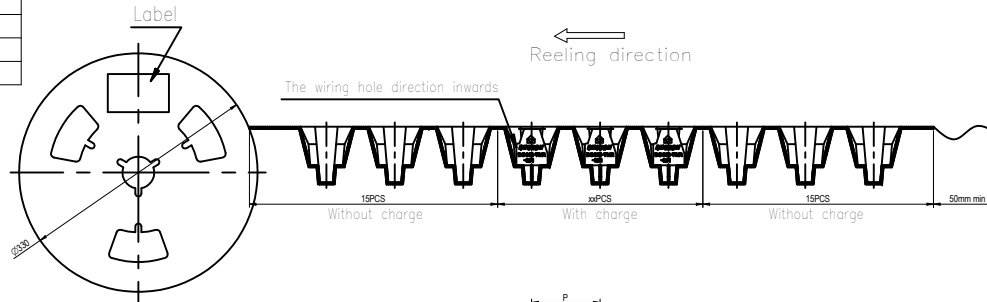


Pole	Width /W	Pitch /P	Width/F	Width/BO	Qty. per reel	Reel qty. per carton	Qty. per carton
02P	24mm	16mm	11.50mm	7.92mm	300	10	3000
03P	24mm	16mm	11.50mm	11.73mm	300	10	3000
04P	32mm	16mm	14.20mm	15.54mm	300	8	2400
05P	44mm	16mm	20.20mm	19.35mm	300	5	1500
06P	44mm	16mm	20.20mm	23.16mm	300	5	1500

公差/General tolerances (mm)												D		
0	>3	>6	>10	>18	>30	>50	>80	>120	>180	>250	>315		>400	>500
~	3	6	10	18	30	50	80	120	180	250	315	400	500	0.1/10
±0.12	±0.18	±0.22	±0.26	±0.31	±0.37	±0.57	±0.80	±0.93	±1.05	±1.15	±1.60	±2.20	±2.50	±2



5	Tape	Kapton	/	
4	Screw	Steel	M2/Zn plated	
3	Housing	Thermoplastic	UL94V-0	
2	Cage	Copper alloy	M2/Ni plated	
1	Pin_header	Copper alloy	Sn plated	
ITEM	NAME OF PART	MATERIAL	NOTES	
UL 标准/UL Standard:		B	C	D
额定电压/电流/Rated Voltage(V)/Current(A)		150/10	/	/
IEC 标准/IEC Standard:				
过压类别/Overvoltage Category/污染等级/Pollution Degree		III/3	III/2	II/2
额定电压/电流/Rated Voltage(V)/Current(A)		63/13.5	200/13.5	200/13.5
额定脉冲电压(KV)/Rate Impulse Voltage(KV)		2.5	2.5	2.5
螺丝扭矩/Torque Tightening(N·m/Lb.in)		M2_0.2/1.77		
线径范围(硬线和软线)/Wire Range(rigid and flexible)(AWG/mm ²)		30~16 / 0.2~1.5		
间距/Pitch(mm)/线数范围/Poles		3.81/N=02~08P		
剥线长度/Stripping length(mm)		5~6		
使用温度范围/Operating temperature(°C)		-40~+130		
符合RoHS环保要求/Conform to RoHS		Yes		

DEGSON		MATERIAL: -	SURFACE/COLOR:		
APPD: 竺春华	2023.10.27	NAME:	DG381-THR-3.81-XXP-1Y-00Z(H)		
CHKD: 陈滔	2023.10.18	MAT NO./REV: -	/	00	MAT STATUS: 批量
DRFT: 袁路勇	2023.10.18	DRAWING NO.	200123967	TYPE	CUSTOMER DRAWING
REV	ECN	DESCRIPTION	DRFT	DATE	DRAWING STATUS
01		增加卷带包装示意图	袁路勇	2023.10.18	已发布
					SCALE
					1:1
					SHEET
					1/1

REV	ECN	DESCRIPTION	DRFT	DATE
01		增加卷带包装示意图	袁路勇	2023.10.18

Transfer or duplication of this document as well as the utilization of its contents without the written permission of DEGSON is prohibited. 未经授权复制或传播本文件及其内容，或未经许可使用其内容，均属于侵权行为。如有任何侵权，请联系本公司法务部处理。 All rights reserved for patent.