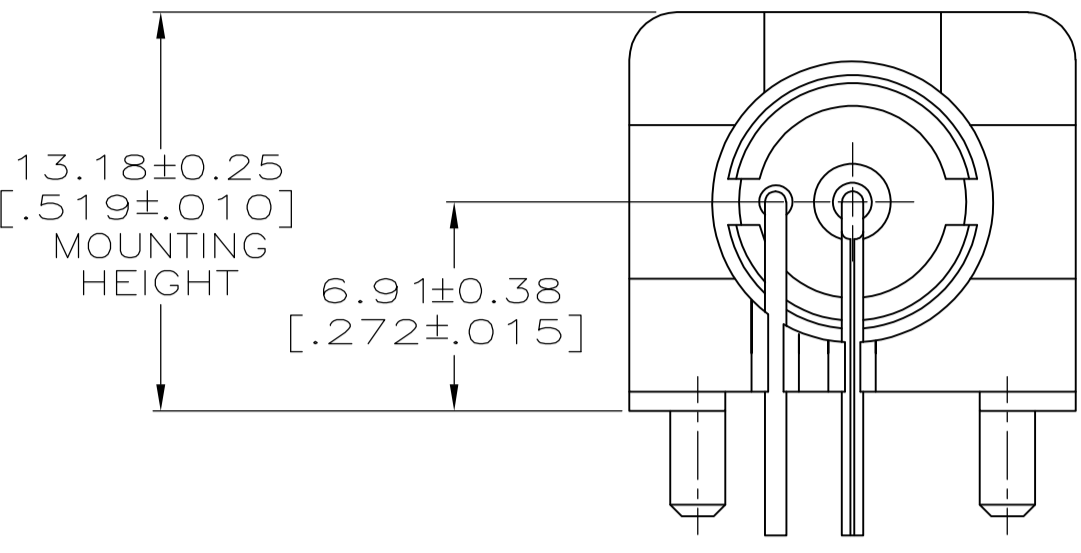
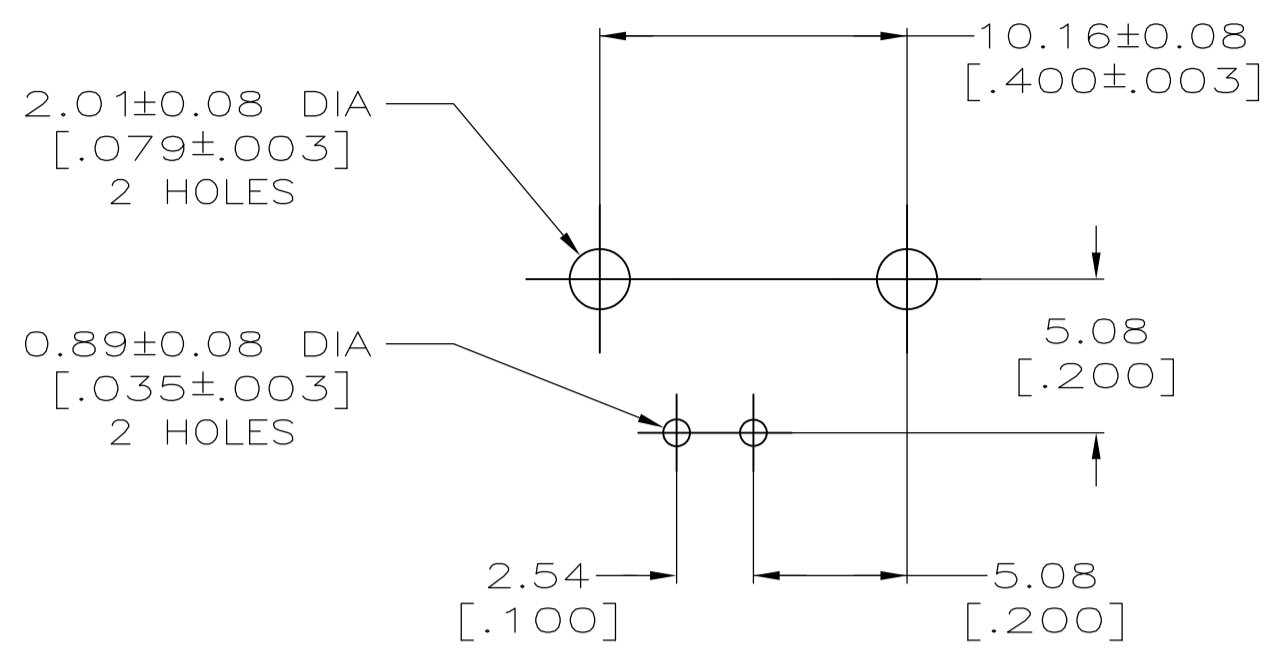
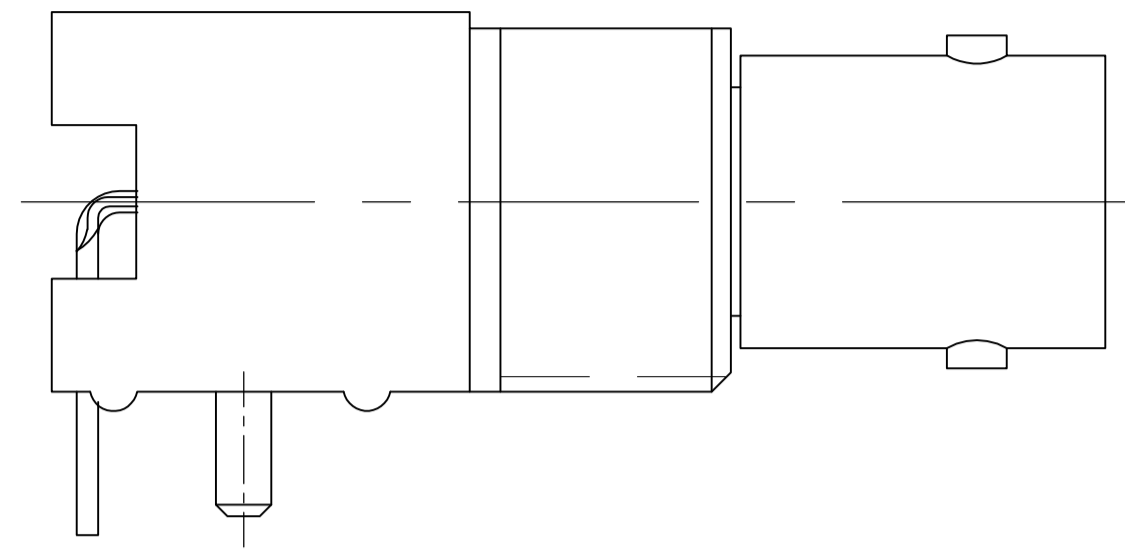


THIS DRAWING IS UNPUBLISHED. RELEASED FOR PUBLICATION. COPYRIGHT BY TYCO ELECTRONICS CORPORATION. ALL RIGHTS RESERVED.

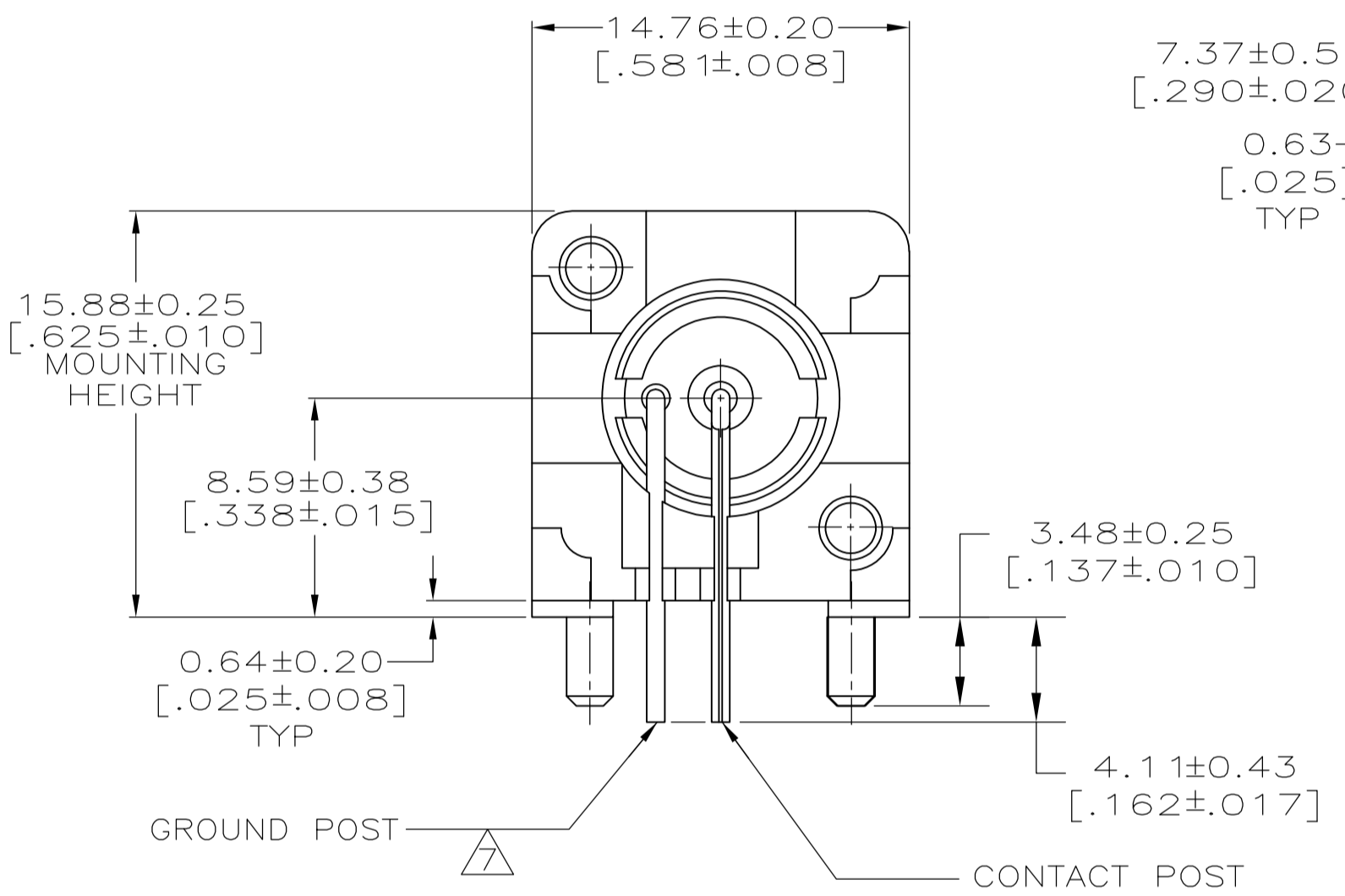
LOC		DIST		REVISIONS				
LOC	DIST	REV	DATE	BY	CHKD	APPD		
AJ	16	AF	7/21/2008	DW	JL			
		AF1	11/JAN/10	KK	AEG			



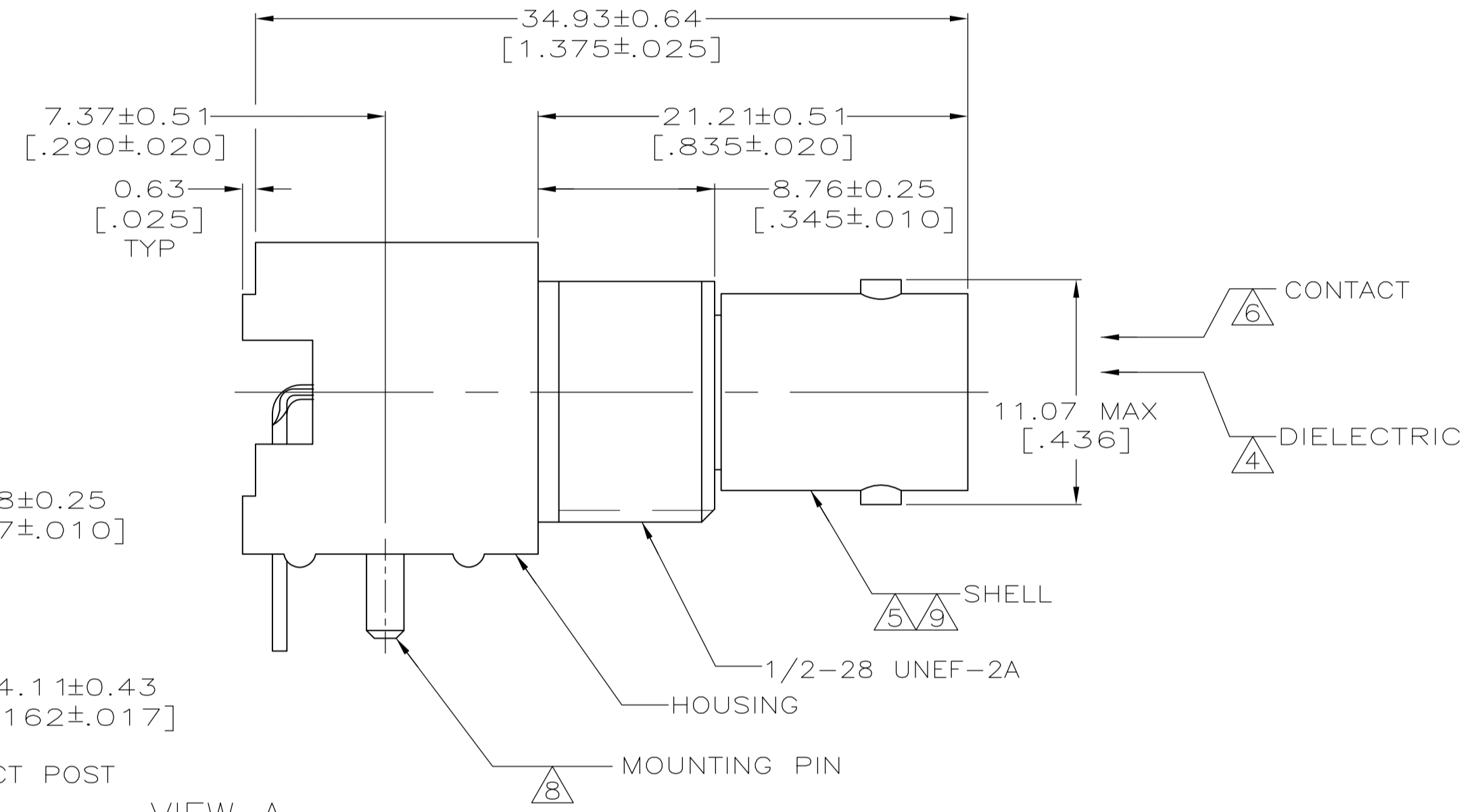
VIEW C
(SAME AS VIEW A EXCEPT AS SHOWN)



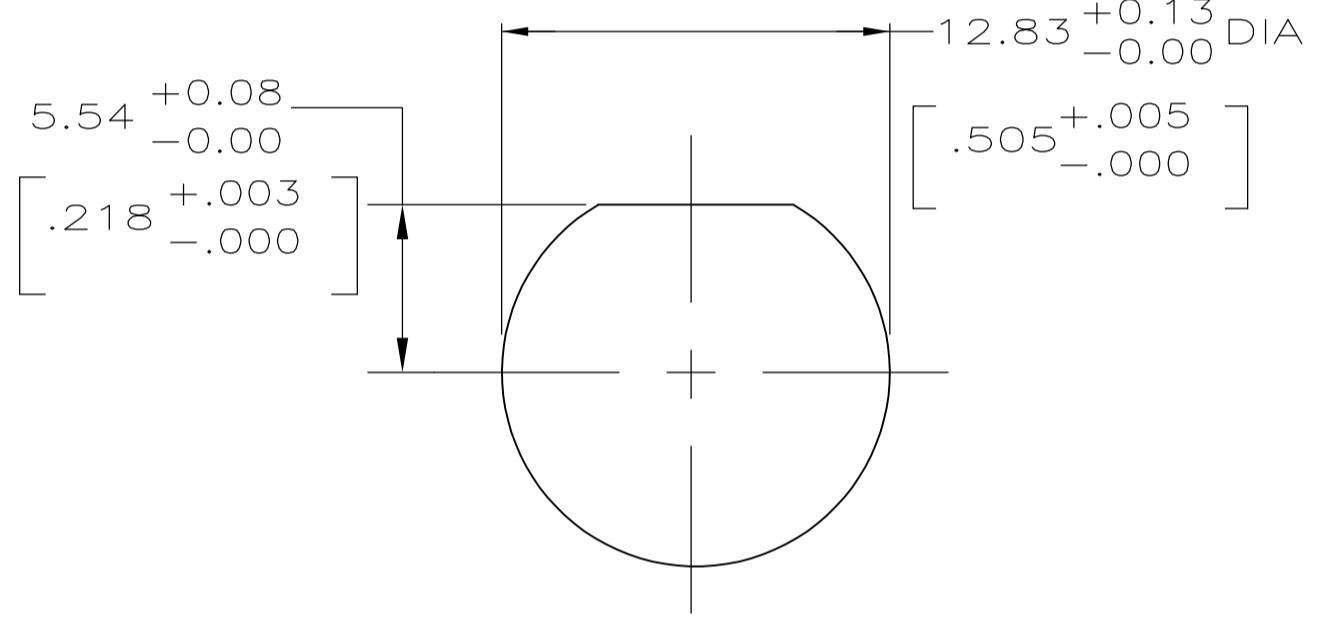
PCB CONFIGURATION



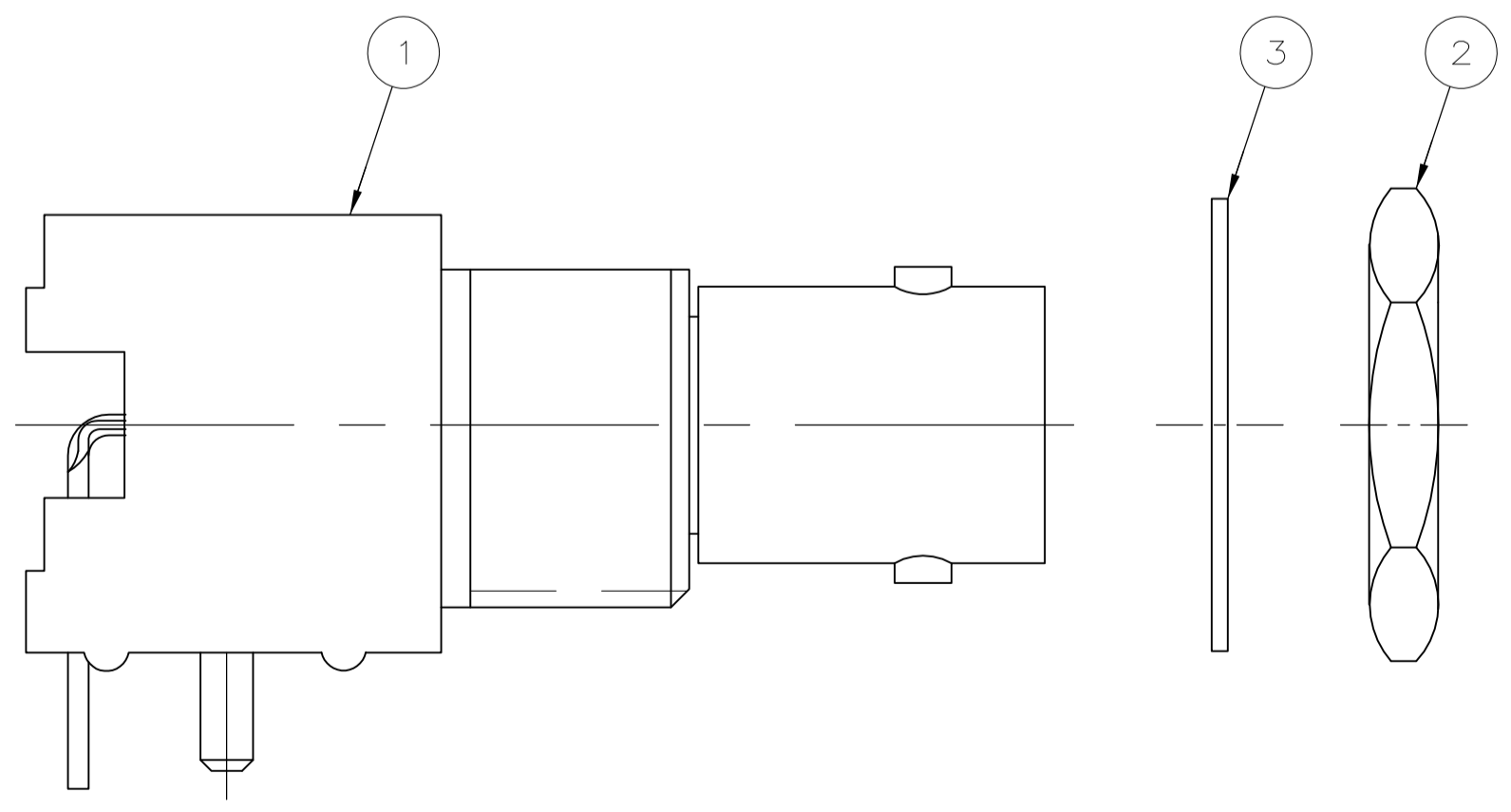
VIEW A



RECOMMENDED PANEL CUTOUT



- 1 POLYESTER PBT PER MIL-M-24519, TYPE GPT-15F, UL94V-0 RATED, COLOR:WHITE
- 2 POLYESTER PBT PER MIL-M-24519, TYPE GPT-15F, UL94V-0 RATED, COLOR:BLACK
- 3 POLYESTER PCT GENERAL PURPOSE, 30% GLASS FILLED, UL94V-0 RATED, COLOR:GRAY
- 4 POLYMETHYLPENTENE, GENERAL PURPOSE.
- 5 ZINC PER QQ-Z-363.
- 6 PHOSPHOR BRONZE PER QQ-B-750.
- 7 BRASS PER ASTM-B-453.
- 8 BRASS PER ASTM-B-16.
- 9 NICKEL PLATE PER QQ-N-290, 3.81 μm [0.000150] MINIMUM THICK.
- 10 TIN PLATE PER ASTM-B-545, 3.81 μm [0.000150] MINIMUM THICK.
- 11 GOLD PLATE PER MIL-G-45204, 0.76 μm [0.000030] MINIMUM THICK.
- 12 GOLD PLATE PER MIL-G-45204, 1.27 μm [0.000050] MINIMUM THICK.
- 13 SILVER PLATE PER QQ-S-365, 2.54 μm [0.000100] MINIMUM THICK.
- 14 TIN PLATE PER ASTM-B-545, 3.81 μm [0.000150] MINIMUM THICK.
15. SEE INSTRUCTION SHEET 2769.
- 16 OBSOLETE PARTS: OBSOLETE CIS STREAMLINING PER D.RENAUD/D.SINISI



VIEW B

REVISION	DATE	BY	CHKD	APPD	DESCRIPTION
16					SUPERSEDED BY 5227161-2
					SUPERSEDED BY 5227161-1
					SUPERSEDED BY 1-5227161-7
					SUPERSEDED BY 1-5227161-6
					OBSOLETE
					SUPSD BY 415218-5 OR 415218-6
					SUPERSEDED BY 227161-7
					SUPERSEDED BY 227161-7
					OBSOLETE
					SUPERSEDED BY 227161-7
					SUPERSEDED BY 227161-3
					SUPERSEDED BY 227161-6

MOUNTING PIN PLATING	GROUND POST PLATING	CONTACT POST PLATING	CONTACT FINISH	HOUSING MATERIAL	VIEW	LOCKWASHER	JAM NUT	ASSEMBLY	PART NUMBER
14	14	14	14	2	3	2	1	1	
10	10	10	10	11	1	1	1	1	9-227161-1
10	10	10	10	11	2	1	1	1	9-227161-0
10	10	10	10	11	1	1	1	1	1-227161-7
10	10	10	10	11	2	1	1	1	1-227161-6
10	10	10	10	11	1	1	1	1	1-227161-4
10	10	10	10	11	3	1	1	1	1-227161-3
10	10	10	10	11	1	1	1	1	1-227161-3
10	10	10	10	11	2	1	1	1	1-227161-2
10	10	10	10	11	1	1	1	1	1-227161-1
10	10	10	10	11	2	1	1	1	1-227161-1
10	10	10	10	11	1	1	1	1	227161-9
10	10	10	10	11	2	1	1	1	227161-8
10	10	10	10	11	1	1	1	1	227161-7
10	10	10	10	11	1	1	1	1	227161-6
10	10	10	10	11	2	1	1	1	227161-5
10	10	10	10	11	1	1	1	1	227161-4
10	10	10	10	11	1	1	1	1	227161-3
10	10	10	10	11	1	1	1	1	227161-2
10	10	10	10	11	2	1	1	1	227161-1

THIS DRAWING IS A CONTROLLED DOCUMENT.

DIMENSIONS: INCHES TOLERANCES UNLESS OTHERWISE SPECIFIED:

0. PLC ± -	5-2-91
1. PLC ± -	5-6-91
2. PLC ± 0.05 [0.002]	
3. PLC ± -	
4. PLC ± -	
ANGLES ± -	

MATERIAL FINISH

Tyco Electronics Corporation
Harrisburg, Pa 17105-3608

APVD: J. LIPPERT
NAME: M. E. COWHER
PRODUCT SPEC: 108-12078
APPLICATION SPEC

SIZE: A1
CAGE CODE: 00779
DRAWING NO: 227161
RESTRICTED TO: -

CUSTOMER DRAWING SCALE: 4:1 SHEET: 1 of 1 REV: AF1