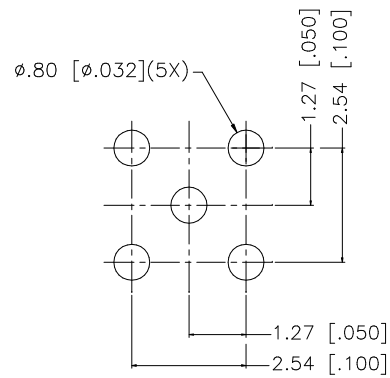
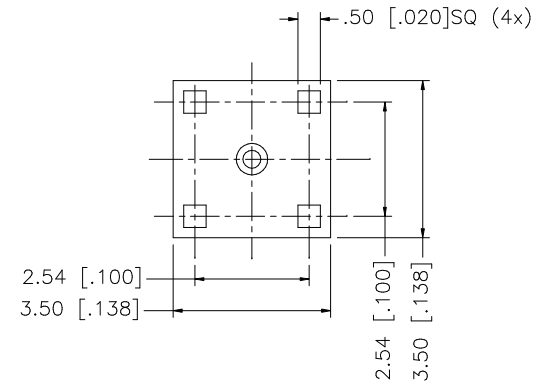
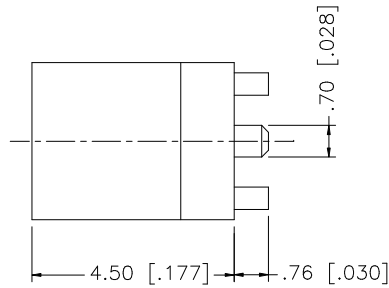


REV.	DATE	DESCRIPTION
NC	05/18/99	INITIAL RELEASE
A	11/26/05	UPDATE DRAWING FORMAT



PCB MOUNTING HOLES



8				
7				
6				
5				
4				
3	CONTACT PIN	BER. COPPER	GOLD	1
2	INSULATOR	TEFLON	NATURAL	1
1	BODY	BRASS	GOLD	1
	DESCRIPTION	MATERIAL	FINISH	QTY

UNLESS OTHERWISE SPECIFIED DIMENSIONS ARE IN MILLIMETERS. DIMENSIONS IN [] ARE IN INCHES AND FOR CUSTOMER REFERENCE ONLY.

UNLESS OTHERWISE SPECIFIED TOLERANCES FOR MILLIMETERS ARE:
 0.5 - 8mm ± 0.20mm
 8 - 30mm ± 0.40mm
 30 - 120mm ± 0.50mm

UNLESS OTHERWISE SPECIFIED TOLERANCES FOR INCHES ARE:
 .020 - .315 = ± 0.007"
 .315 - 1.180 = ± 0.015"
 1.180 - 4.724 = ± 0.020"

DO NOT SCALE DRAWING

APPROVALS		DATE
DRAWN	G.R.S.	11/26/05
CHECKED		
ISSUED		
SHEET	1 OF 1	
CAD FILE	C:/162/162109.DWG	

Amphenol Connex

PART DESCRIPTION

MMCX SURFACE MOUNT JACK

PART NO.

262109

DWG. NO.

262109.DWG

REV. A

SIZE A

SCALE NA