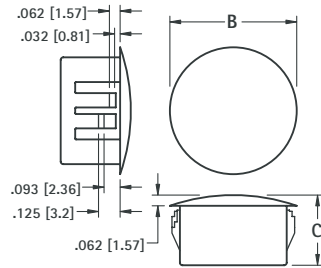
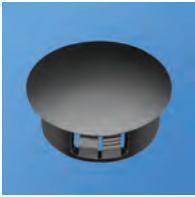


NYLON HOLE PLUGS

Closes unused chassis holes quickly and economically. Plugs are abrasion and vibration resistant.

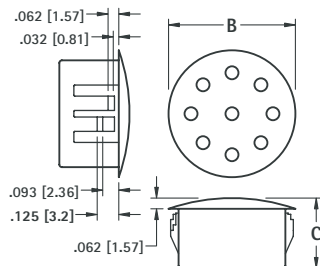


MATERIAL: Nylon 6/6, Matte Finish, Black

| CAT. NO. | HOLE DIAMETER | PANEL THICKNESS | B | C |
|----------|---------------|-----------------|--------------|-------------|
| 8600 | .250 (6.4) | .062 (1.57) | .312 (7.9) | .312 (7.9) |
| 8601 | .312 (7.9) | .062 (1.57) | .375 (9.5) | .312 (7.9) |
| 8602 | .375 (9.5) | .125 (3.2) | .468 (11.9) | .406 (10.3) |
| 8603 | .500 (12.7) | .125 (3.2) | .578 (14.7) | .406 (10.3) |
| 8604 | .625 (15.9) | .125 (3.2) | .734 (18.6) | .406 (10.3) |
| 8605 | .750 (19.1) | .125 (3.2) | .921 (23.4) | .406 (10.3) |
| 8606 | .875 (22.2) | .125 (3.2) | 1.015 (25.8) | .453 (11.5) |
| 8607 | 1.000 (25.4) | .125 (3.2) | 1.203 (30.6) | .453 (11.5) |
| 8608 | 1.125 (28.6) | .125 (3.2) | 1.218 (30.9) | .453 (11.5) |
| 8609 | 1.250 (31.8) | .125 (3.2) | 1.375 (34.9) | .453 (11.5) |
| 8610 | 1.375 (34.9) | .125 (3.2) | 1.500 (38.1) | .453 (11.5) |
| 8611 | 1.500 (38.1) | .125 (3.2) | 1.671 (42.4) | .453 (11.5) |

NYLON VENT PLUGS

Used to cover chassis holes while allowing air flow for ventilation.

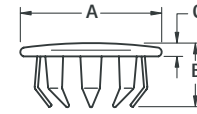


MATERIAL: Nylon 6/6, Matte Finish, Black

| CAT. NO. | HOLE DIAMETER | PANEL THICKNESS | B | C |
|----------|---------------|-----------------|--------------|-------------|
| 8612 | .875 (22.2) | .125 (3.2) | 1.015 (25.8) | .453 (11.5) |
| 8613 | 1.000 (25.4) | .125 (3.2) | 1.218 (30.9) | .453 (11.5) |

STEEL HOLE PLUGS

Excellent spring retention. Plugs will cover chassis holes, wiring outlets, access holes or unused openings.



MATERIAL: Steel, Nickel Plate

| CAT. NO. | HOLE DIAMETER | PANEL THICKNESS | A | B | C | PRONGS |
|----------|---------------|-----------------------|--------------|-------------|-------------|--------|
| 7600 | .250 (6.4) | .031-.062 (.81-1.57) | .406 (10.3) | .234 (5.9) | .062 (1.57) | 6 |
| 7601 | .312 (7.9) | .047-.078 (1.19-1.98) | .437 (11.1) | .250 (6.4) | .062 (1.57) | 6 |
| 7602 | .375 (9.5) | .047-.062 (1.19-1.57) | .500 (12.7) | .234 (5.9) | .062 (1.57) | 6 |
| 7603 | .500 (12.7) | .031-.062 (.81-1.57) | .656 (16.7) | .281 (7.1) | .078 (1.98) | 8 |
| 7604 | .625 (15.9) | .062-.093 (1.57-2.36) | .812 (20.6) | .296 (7.5) | .078 (1.98) | 8 |
| 7605 | .750 (19.1) | .062-.093 (1.5-2.36) | .921 (23.4) | .296 (7.5) | .078 (1.98) | 12 |
| 7606 | .875 (22.2) | .062-.093 (1.57-2.36) | 1.062 (27.0) | .296 (7.5) | .062 (1.57) | 12 |
| 7607 | 1.000 (25.4) | .062-.156 (1.57-3.9) | 1.140 (29.0) | .328 (8.3) | .093 (2.36) | 12 |
| 7608 | 1.125 (28.6) | .031-.125 (.79-3.2) | 1.312 (33.3) | .343 (8.7) | .093 (2.36) | 12 |
| 7609 | 1.250 (31.8) | .062-.093 (1.57-2.36) | 1.437 (36.5) | .343 (8.7) | .093 (2.36) | 12 |
| 7610 | 1.375 (34.9) | .031-.125 (.79-3.2) | 1.562 (39.7) | .406 (10.3) | .078 (1.98) | 12 |
| 7611 | 1.500 (38.1) | .031-.062 (.79-1.57) | 1.640 (41.7) | .406 (10.3) | .093 (2.36) | 12 |

RECESSED BUMPERS

Provides excellent traction and shock absorbing qualities. available with or without Mold-in Washers.



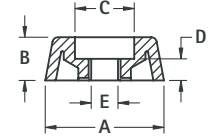
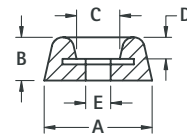
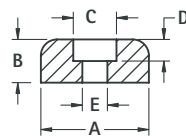
FIG. 1



FIG. 2 Mold-In Washer



FIG. 3 Mold-In Washer



MATERIAL: Rubber, BUNA S (Figs. 1 & 2), Thermoplastic (Fig. 3)

| CAT. NO. | FIG. | A | B | C | D | E | SCREW SIZE |
|----------|------|--------------|-------------|-------------|------------|------------|------------|
| 720 | 1 | .500 (12.7) | .250 (6.4) | .250 (6.4) | .187 (4.7) | .125 (3.2) | # 4 |
| 721 | 1 | .625 (15.9) | .312 (7.9) | .250 (6.4) | .187 (4.7) | .125 (3.2) | # 4 |
| 722 | 1 | .718 (18.2) | .437 (11.1) | .250 (6.4) | .218 (5.5) | .125 (3.2) | # 4 |
| 723 | 2 | .937 (23.8) | .375 (9.5) | .375 (9.5) | .187 (4.7) | .187 (4.7) | # 8 |
| 724* | 3 | .687 (17.4) | .250 (6.4) | .343 (8.7) | .125 (3.2) | .155 (3.9) | # 6 |
| 725* | 3 | .875 (22.2) | .312 (7.9) | .406 (10.3) | .125 (3.2) | .187 (4.7) | # 8 |
| 726* | 3 | 1.062 (27.0) | .437 (11.1) | .468 (11.9) | .234 (5.9) | .200 (5.1) | # 10 |
| 727 | 3 | .562 (14.3) | .375 (9.5) | .218 (5.5) | .187 (4.7) | .115 (2.9) | # 4 |
| 728 | 3 | .750 (19.1) | .437 (11.1) | .265 (6.7) | .250 (6.4) | .148 (3.8) | # 6 |
| 729 | 3 | .937 (23.8) | .625 (15.9) | .359 (9.1) | .297 (7.5) | .174 (4.4) | # 8 |

* Gray, All Others Black

SELF-LOCKING BUMPER FOOT

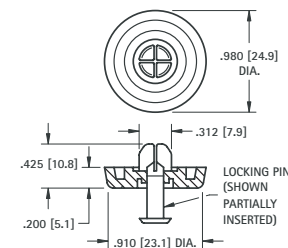


- A unique easy-to-install self-locking bumper foot
- Two piece assembly, furnished pre-assembled
- Vibration absorbing and skid resistant
- Mounts without screws or tools

Recommended Mounting Hole: .305 (7.8) diameter

MATERIAL:

Foot: Santoprene, Black **Pin:** Polypropylene, Black



CAT. NO. 717