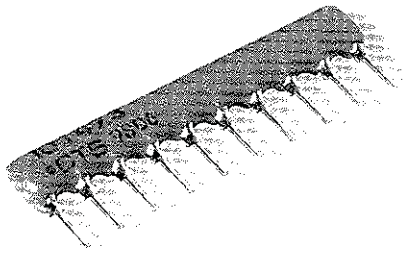


# Single-In-Line Conform



## Thick film resistor network single-in-line package

CTS' expertise in resistor network technology is available in space-saving conformal products.

- High-reliability cermet resistors
- 2% standard resistor tolerance
- Laser marking for permanent identification
- High-temperature solder
- Tapered packaging available
- Low profile
- Low cost

### Resistance Range:

Standard: 10Ω through 1 MegΩ

### Resistance Tolerance:

Standard: ±2% or 0.5Ω (whichever is greater)

### Maximum Operating Voltage:

100V not to exceed rated power

### Temperature Coefficient:

±100PPM/°C ≥50Ω

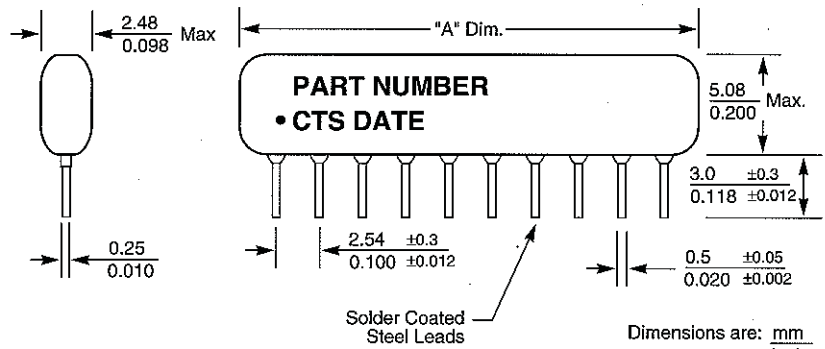
±200PPM/°C <50Ω

### Operating Temperature Range:

-55°C to +125°C

### Dielectric Strength:

200 VDC



### NOTES:

- Dimensions are mm/in.
- Steel Leads, Solder Coated
- Product Color Gold

Dimensions are:  $\frac{\text{mm}}{\text{inch}}$

Product Color: Gold

| Number Pins      | "A" Dimension<br>±0.25/0.010<br>mm/in | Package Power<br>@25°C          | Package Power<br>@70°C          |
|------------------|---------------------------------------|---------------------------------|---------------------------------|
| 4                | 10.2/0.4                              | 0.60 W                          | 0.40 W                          |
| 5                | 12.7/0.5                              | 0.83 W                          | 0.52 W                          |
| 6                | 15.3/0.6                              | 0.96 W                          | 0.64 W                          |
| 7                | 17.8/0.7                              | 1.18 W                          | 0.76 W                          |
| 8                | 20.4/0.8                              | 1.32 W                          | 0.88 W                          |
| 9                | 22.9/0.9                              | 1.49 W                          | 1.00 W                          |
| 10               | 25.4/1.0                              | 1.66 W                          | 1.11 W                          |
| 11               | 28.0/1.1                              | 1.83 W                          | 1.24 W                          |
| 12               | 30.5/1.2                              | 2.00W                           | 1.35 W                          |
| <b>Schematic</b> |                                       | <b>Resistor Power<br/>@25°C</b> | <b>Resistor Power<br/>@70°C</b> |
| 1 & 5            |                                       | 0.15 W                          | 0.10 W                          |
| 3 (isolated)     |                                       | 0.30 W                          | 0.20 W                          |

### Standard Dual Terminator Values

| R1   | R2   | Thev | Code    | R1   | R2   | Thev | Code    |
|------|------|------|---------|------|------|------|---------|
| 80Ω  | 130Ω | 50Ω  | 800/131 | 180Ω | 390Ω | 123Ω | 181/391 |
| 120Ω | 200Ω | 75Ω  | 121/201 | 220Ω | 330Ω | 132Ω | 221/331 |
| 160Ω | 260Ω | 100Ω | 161/261 | 330Ω | 390Ω | 178Ω | 331/391 |
| 220Ω | 270Ω | 121Ω | 221/271 | 330Ω | 470Ω | 194Ω | 331/471 |

|  |             |
|--|-------------|
| Power Derating                           | page 45     |
| Land Patterns                            | pages 46-47 |
| Packaging                                | pages 48-49 |
| Environmental Performance Specifications | pages 50-51 |

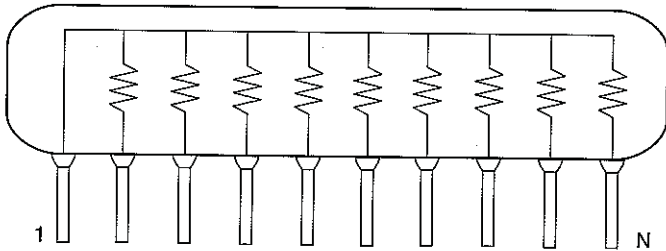
# CTS®

CTS Resistor Products • 406 Parr Road • Berne, IN • 46711 • fax: (219)589-3243 • www.ctscorp.com

# Series 773

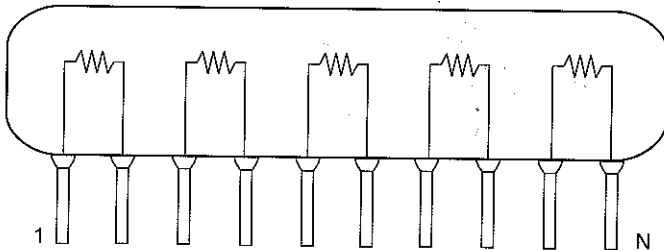
**Bussed CTS Schematic 1**

Available in  
4 through 12 Pins



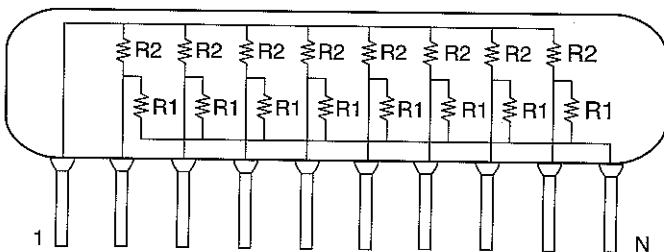
**Isolated CTS Schematic 3**

Available in  
4, 6, 8, 10, 12 Pins



**Dual Terminator CTS Schematic 5**

Available in  
6, 8, 10 Pins



| (Ohms) | EIA Code | (Ohms)  | EIA Code |
|--------|----------|---------|----------|
| 10     | 100      | 3300    | 332      |
| 12     | 120      | 3900    | 392      |
| 15     | 150      | 4700    | 472      |
| 18     | 180      | 5100    | 512      |
| 22     | 220      | 5600    | 562      |
| 27     | 270      | 6800    | 682      |
| 33     | 330      | 8200    | 822      |
| 39     | 390      | 10000   | 103      |
| 47     | 470      | 11000   | 113      |
| 51     | 510      | 12000   | 123      |
| 56     | 560      | 15000   | 153      |
| 68     | 680      | 18000   | 183      |
| 75     | 750      | 20000   | 203      |
| 82     | 820      | 22000   | 223      |
| 100    | 101      | 27000   | 273      |
| 110    | 111      | 33000   | 333      |
| 120    | 121      | 39000   | 393      |
| 150    | 151      | 47000   | 473      |
| 180    | 181      | 51000   | 513      |
| 200    | 201      | 56000   | 563      |
| 220    | 221      | 68000   | 683      |
| 270    | 271      | 82000   | 823      |
| 330    | 331      | 100000  | 104      |
| 390    | 391      | 110000  | 114      |
| 470    | 471      | 120000  | 124      |
| 510    | 511      | 150000  | 154      |
| 560    | 561      | 180000  | 184      |
| 680    | 681      | 220000  | 224      |
| 820    | 821      | 270000  | 274      |
| 1000   | 102      | 330000  | 334      |
| 1100   | 112      | 390000  | 394      |
| 1200   | 122      | 470000  | 474      |
| 1500   | 152      | 510000  | 514      |
| 1800   | 182      | 560000  | 564      |
| 2200   | 222      | 680000  | 684      |
| 2700   | 272      | 820000  | 824      |
|        |          | 1000000 | 105      |

**How to Order  
Series 773 Products**

**773**

**10**

**3**

**103**

Series 773

No. of Pins

Schematic 1 Bussed  
3 Isolated  
5 Dual Terminator

Resistor Code Schematics 1 & 3  
Resistor Code Schematic 5

Example 221/331 = 220Ω/330Ω

All standard part numbers are ±2%

NOTE: No dashes or spaces to appear in part number.

Example: 773103103

See page 45 for part marking information.