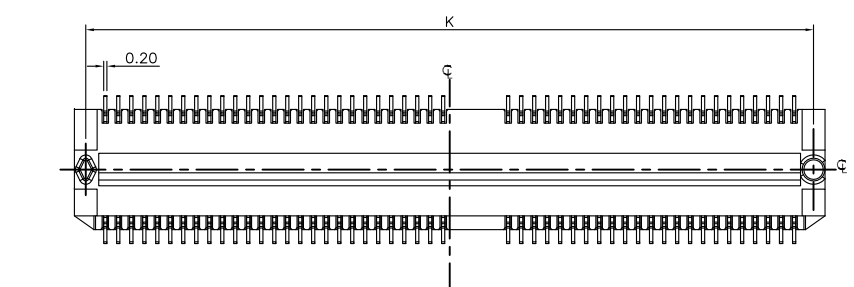
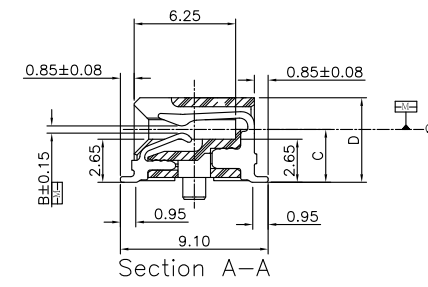
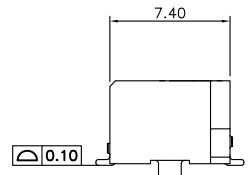
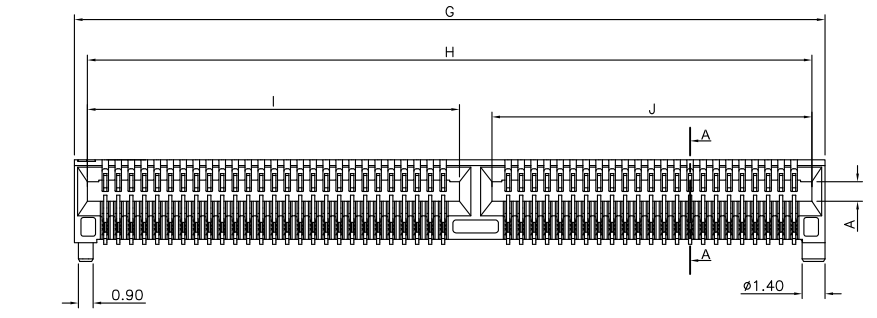
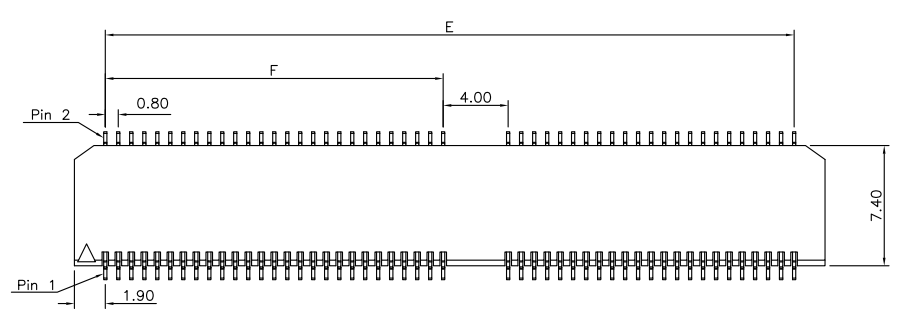


REV.	SPECIFICATION	ECN NO.	APPD.
X2			



8208- 2 X xx C 10 D R 2 P N 1 T
 Series: 8208-
 Double Row: 2
 Position Per Row: xx
 C: Selective Gold Plated
 10: 10 μ "
 30: 30 μ "
 D: SMD Type
 R: Right Angle
 1: With Front Key
 L: With Lock
 N: W/O Lock
 P: With Post
 N: Without Post
 1: Card Thickness 1.00mm
 2: Card Thickness 1.57mm
 T: Tape & Reel Package

**Available Card Thickness				
Card Thickness	A	B	C	D
	1.00	1.20	0.45	3.25
*	1.57	1.80	0.95	3.54

**Available Position								
Position	Dimension							
	E	F	G	H	I	J	K	L
26	12.80	4.00	16.60	15.00	6.10	6.90	15.20	14.86
50	22.40	4.00	26.20	24.60	6.10	16.50	24.80	24.46
74	32.00	16.00	35.80	34.20	18.10	14.10	34.40	34.06
80	34.40	16.80	38.20	36.60	18.90	15.70	36.80	36.46
98	41.60	20.80	45.40	43.80	22.90	18.90	44.00	43.66
* 100	42.40	20.80	46.20	44.60	22.90	19.70	44.80	44.46

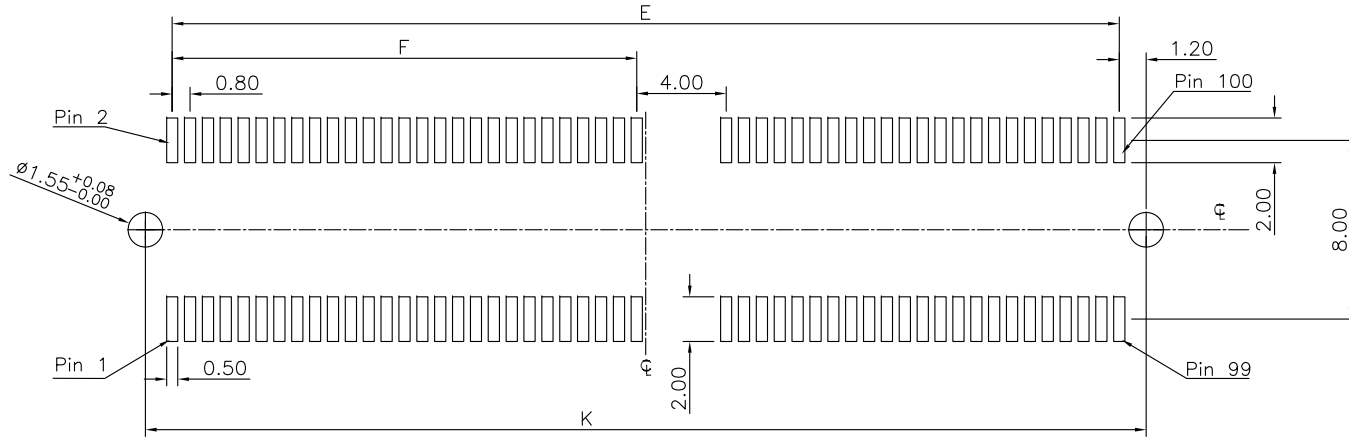
Tolerances	Dwg. No.	8208-D0000-016	
x = ±0.50	Projection	⊕ ⊖	
.x = ±0.25	Unit	mm	Scale
.xx = ±0.15	Drawn By	MXM 11/28'17	1:1

Title:
 8208 Series
 Right Angle Edge Card Connector
 0.80mm (0.0315") Pitch SMD Type

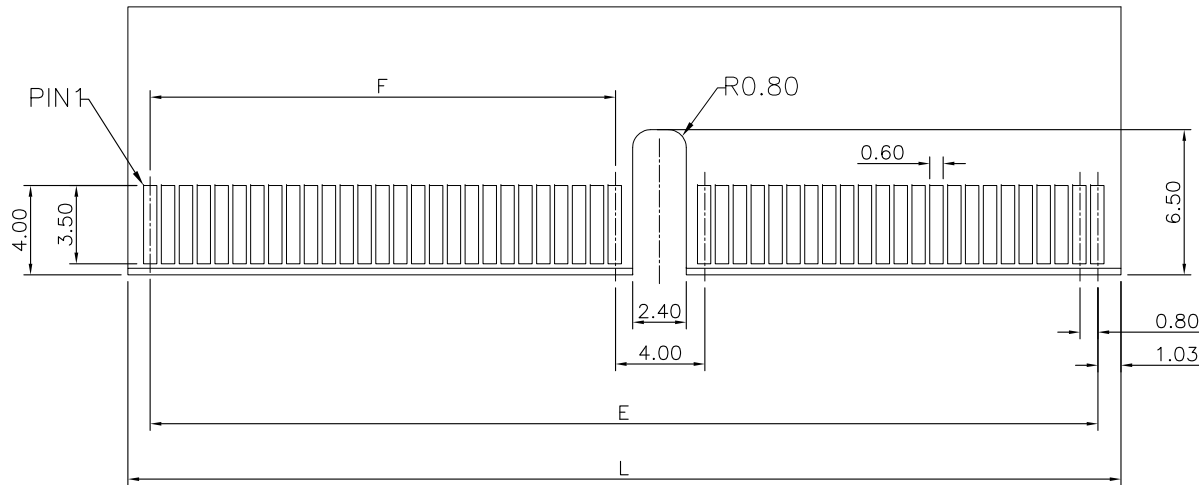
OUPIIN ELECTRONIC(KUNSHAN) CO., LTD.
P/N: 8208-2XxxC10DR2PN1T

SHEET	1/2	Ver.No.	X2
--------------	-----	----------------	----

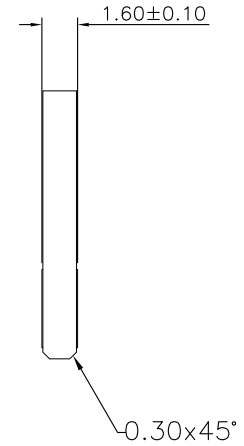
REV.	SPECIFICATION	ECN NO.	APPD.
X2			



P.C. Board Layout
(Tolerance ± 0.05)



RECOMMENDED MATTING BOARD FOOTPRINT
(Tolerance: ± 0.05)



Tolerances x = ± 0.50 .x = ± 0.25 .xx = ± 0.15	Dwg. No.	8208-D0000-016		Title:			
	Projection			8208 Series			
	Unit	mm	Scale	Right Angle Edge Card Connector			
	Drawn By	MXM	11/28'17	0.80mm (0.0315") Pitch SMD Type			
				OUPIIN		OUPIIN ELECTRONIC(KUNSHAN) CO., LTD.	
				P/N:		8208-2XxxC10DR2PN1T	
SHEET		2/2	Ver.No.			X2	