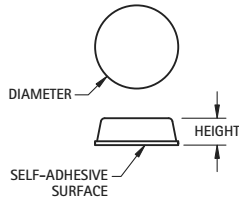


ADHESIVE BUMPERS

Applies quickly and easily. Prevents nicks, scratches, scuffs, vibration, slippage and noise. Easy peel and stick mounting. Crack resistant. High coefficient of friction. Sold in sheets.

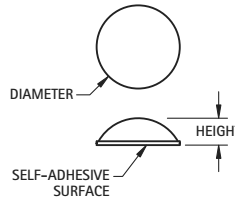
FLAT



MATERIAL: Molded Polyurethane

BLACK CAT. NO.	CLEAR CAT. NO.	DIAMETER	HEIGHT	PARTS/SHEET
780-B	780-C	.375 (9.5)	.125 (3.2)	300
781-B	781-C	.500 (12.7)	.060 (1.5)	200
782-B	782-C	.500 (12.7)	.140 (3.6)	200

DOMED



MATERIAL: Molded Polyurethane

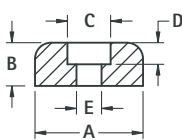
BLACK CAT. NO.	CLEAR CAT. NO.	DIAMETER	HEIGHT	PARTS/SHEET
783-B	783-C	.250 (6.4)	.062 (1.6)	578
784-B	784-C	.335 (8.5)	.085 (2.2)	450
785-B	785-C	.440 (11.2)	.200 (5.1)	200

RECESSED BUMPERS

Provides excellent traction and shock absorbing qualities. available with or without Mold-in Washers.



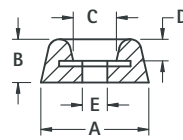
FIG. 1



MATERIAL: Rubber, BUNA N



FIG. 2 Mold-In Washer



MATERIAL: Rubber, BUNA N

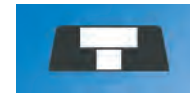
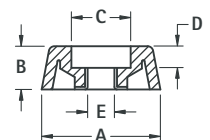


FIG. 3 Mold-In Washer



MATERIAL: EPDM Rubber

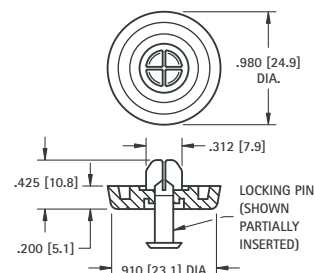
CAT. NO.	FIG.	COLOR	A	B	C	D	E	SCREW SIZE
720	1	BLACK	.500 (12.7)	.250 (6.4)	.250 (6.4)	.187 (4.7)	.125 (3.2)	# 4
721	1	BLACK	.625 (15.9)	.312 (7.9)	.250 (6.4)	.187 (4.7)	.125 (3.2)	# 4
722	1	BLACK	.718 (18.2)	.437 (11.1)	.250 (6.4)	.218 (5.5)	.125 (3.2)	# 4
723	2	BLACK	.937 (23.8)	.375 (9.5)	.375 (9.5)	.187 (4.7)	.187 (4.7)	# 8
724	3	GRAY	.687 (17.4)	.250 (6.4)	.343 (8.7)	.125 (3.2)	.155 (3.9)	# 6
725	3	GRAY	.875 (22.2)	.312 (7.9)	.406 (10.3)	.187 (4.7)	.187 (4.7)	# 8
726	3	GRAY	1.062 (27.0)	.437 (11.1)	.468 (11.9)	.234 (5.9)	.200 (5.1)	# 10
727	3	BLACK	.562 (14.3)	.375 (9.5)	.218 (5.5)	.187 (4.7)	.115 (2.9)	# 4
728	3	BLACK	.750 (19.1)	.437 (11.1)	.265 (6.7)	.250 (6.4)	.148 (3.8)	# 6
729	3	BLACK	.937 (23.8)	.625 (15.9)	.359 (9.1)	.328 (8.3)	.174 (4.4)	# 8

SELF-LOCKING BUMPER FOOT



- A unique easy-to-install self-locking bumper foot
- Two piece assembly, furnished pre-assembled
- Vibration absorbing and skid resistant
- Mounts without screws or tools

Recommended Mounting Hole: .305 (7.8) diameter



MATERIAL:

Foot: Santoprene, Black **Pin:** Polypropylene, Black

CAT. NO. 717