

Fig. 1

- Male shorting jumpers are available with or without insulator and have 0,56 diameter pins with 2,54, 5,08 or 7,62mm center spacing.
- Insulator materials are not high temperature.

For Electrical, Mechanical & Environmental Data, See pg. 4

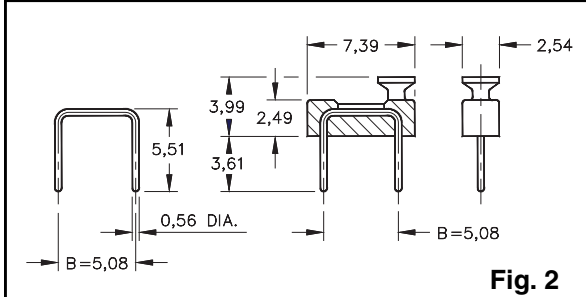
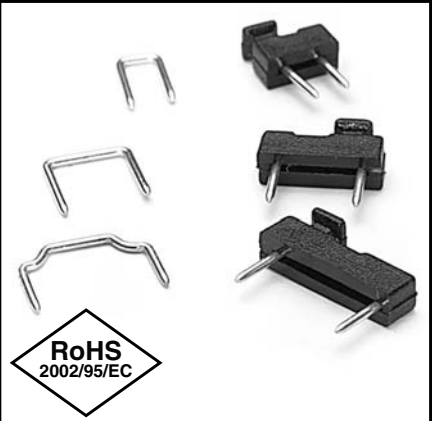


Fig. 2

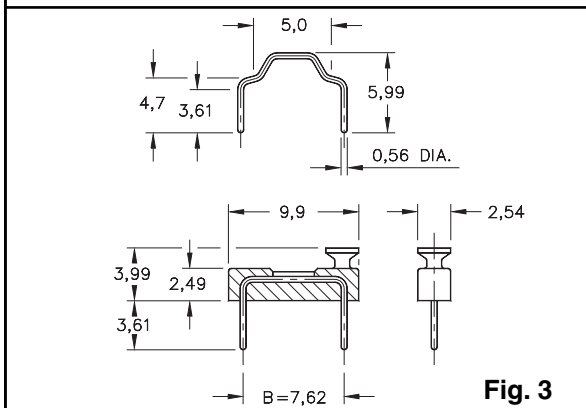
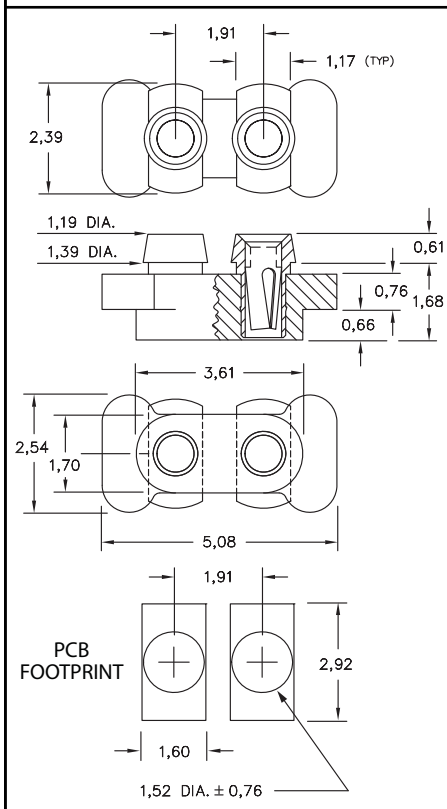


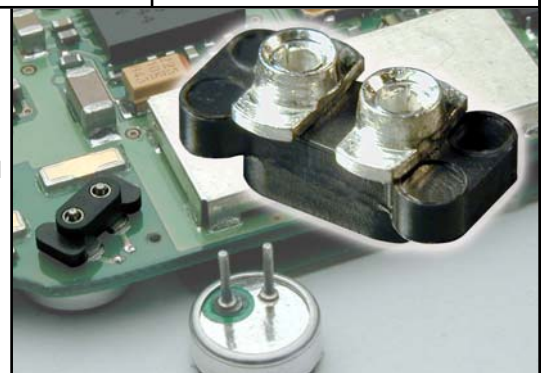
Fig. 3

Ordering Information

Fig. 1	Male Shorting Jumper 2,54 Spacing	
	Color / Style	Plating 0,25µm Au ◇
	Black	999-11-210-10-000000
	Not Insulated	999-11-110-10-000000
Fig. 2	Male Shorting Jumper 5,08 Spacing	
	Color / Style	Plating 0,25µm Au ◇
	Black	999-11-220-10-000000
	Not Insulated	999-11-112-10-000000
Fig. 3	Male Shorting Jumper 7,62 Spacing	
	Color / Style	Plating 0,25µm Au ◇
	Black	999-11-230-10-000000
	Not Insulated	999-11-113-10-000000



- Series 388 microphone socket is a bottom entry socket for microphones having 0,46 dia. pins on 1,91 centers.
- Designed to be surface mount and intrusive reflow soldered.
- Insulator is high temp. Nylon 46, rated UL 94 V-0.
- Series 388 use MM #8874 pins. See page 130 for details.



Microphone Socket

Ordering Information

388-XX-102-11-740800 (Discrete socket)

XX=Plating Code See Below → Plating Code

388-XX-102-11-740799
(Supplied on 12mm wide carrier tape per EIA-481: 6,500 per 330mm reel)

SPECIFY PLATING CODE XX=			99		44 ◇
Sleeve (Pin)			5,08µm Sn/Pb		5,08µm Sn
Contact (Clip)			5,08µm Sn/Pb		5,08µm Sn