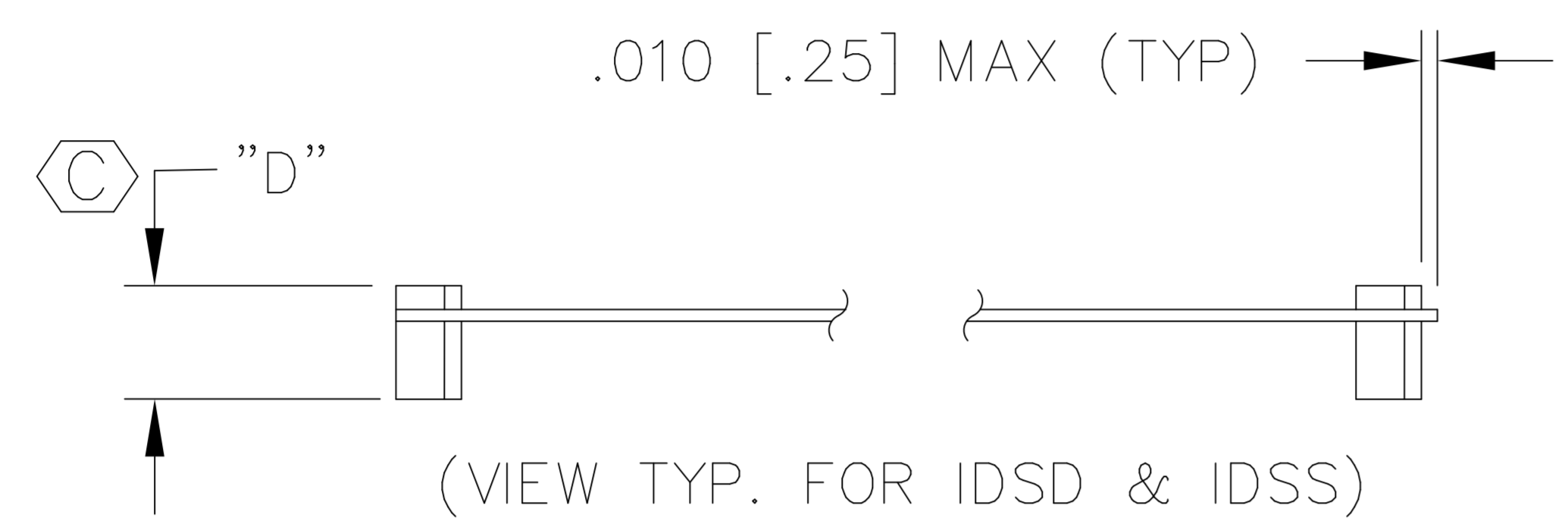
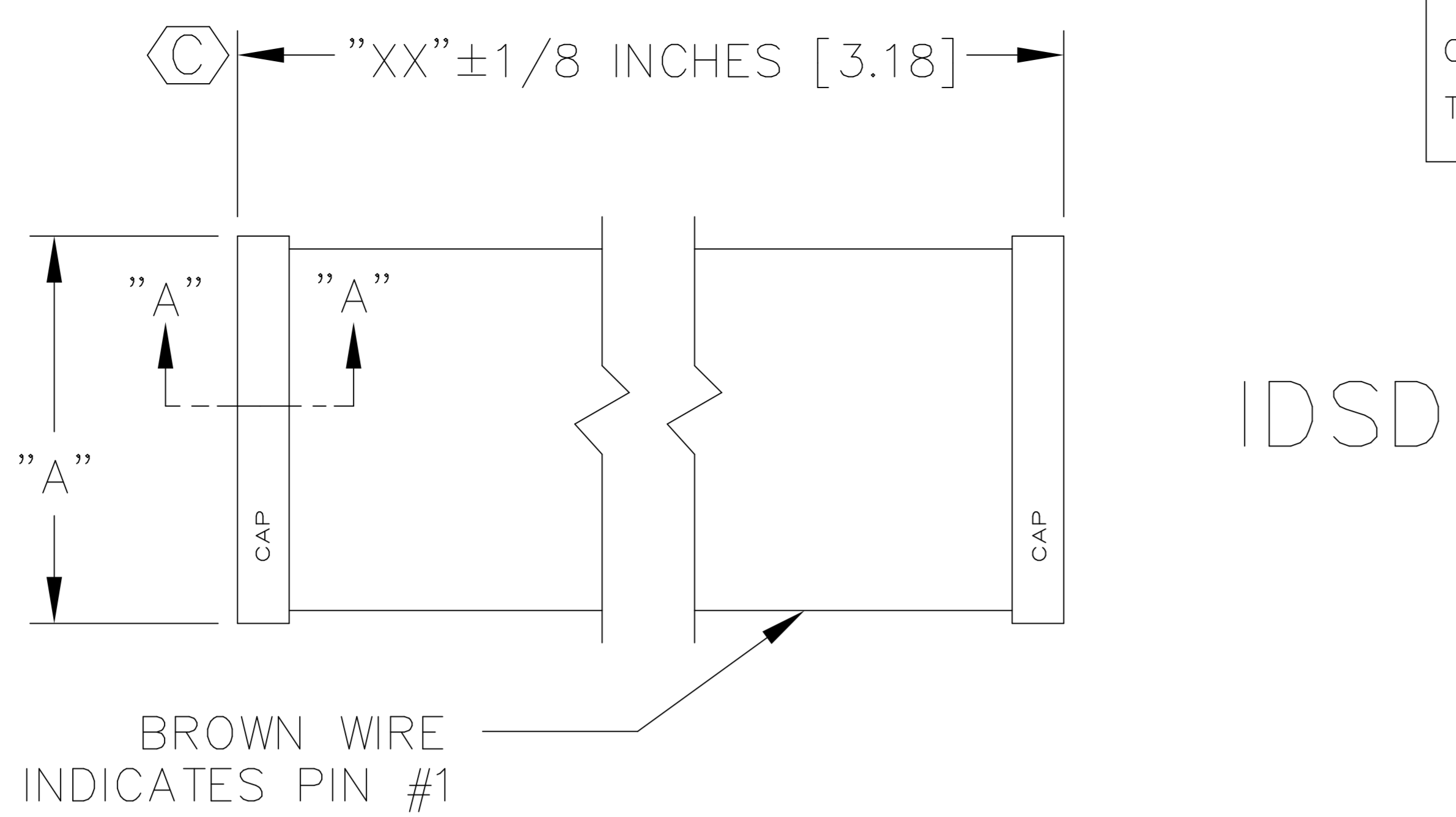


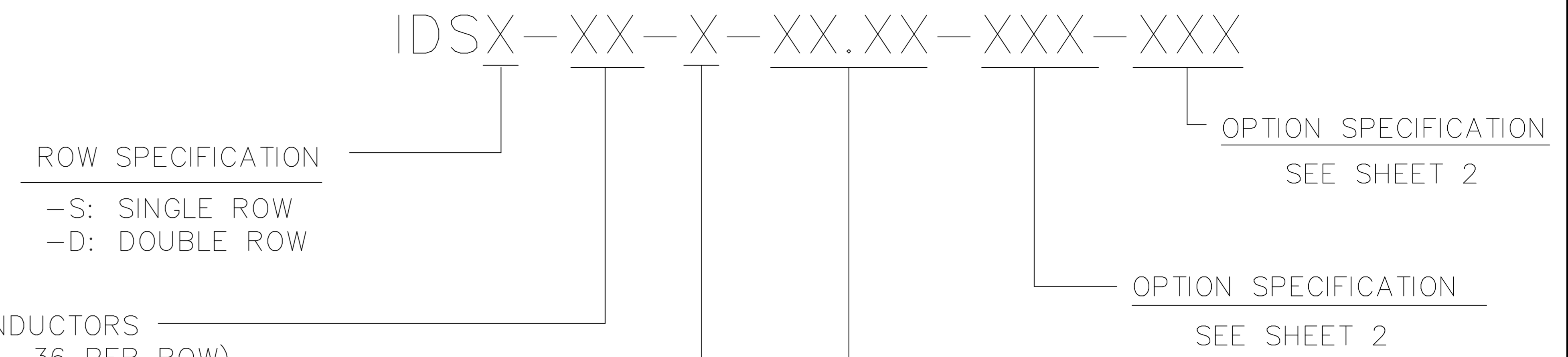
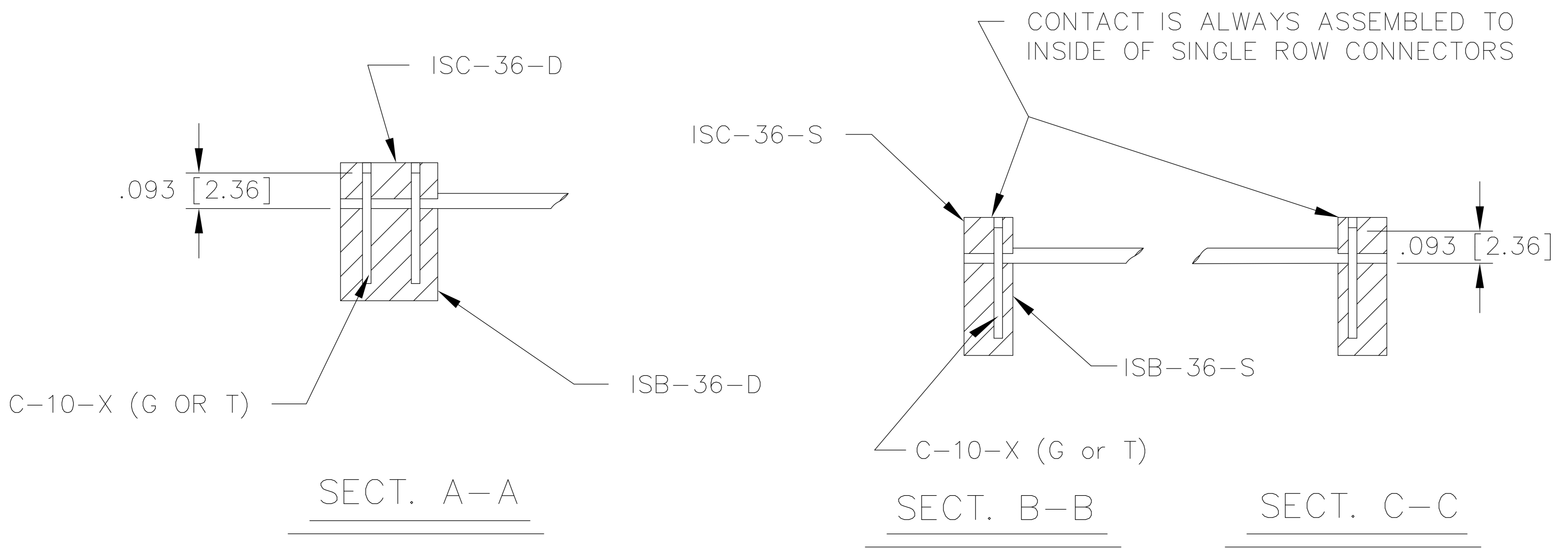
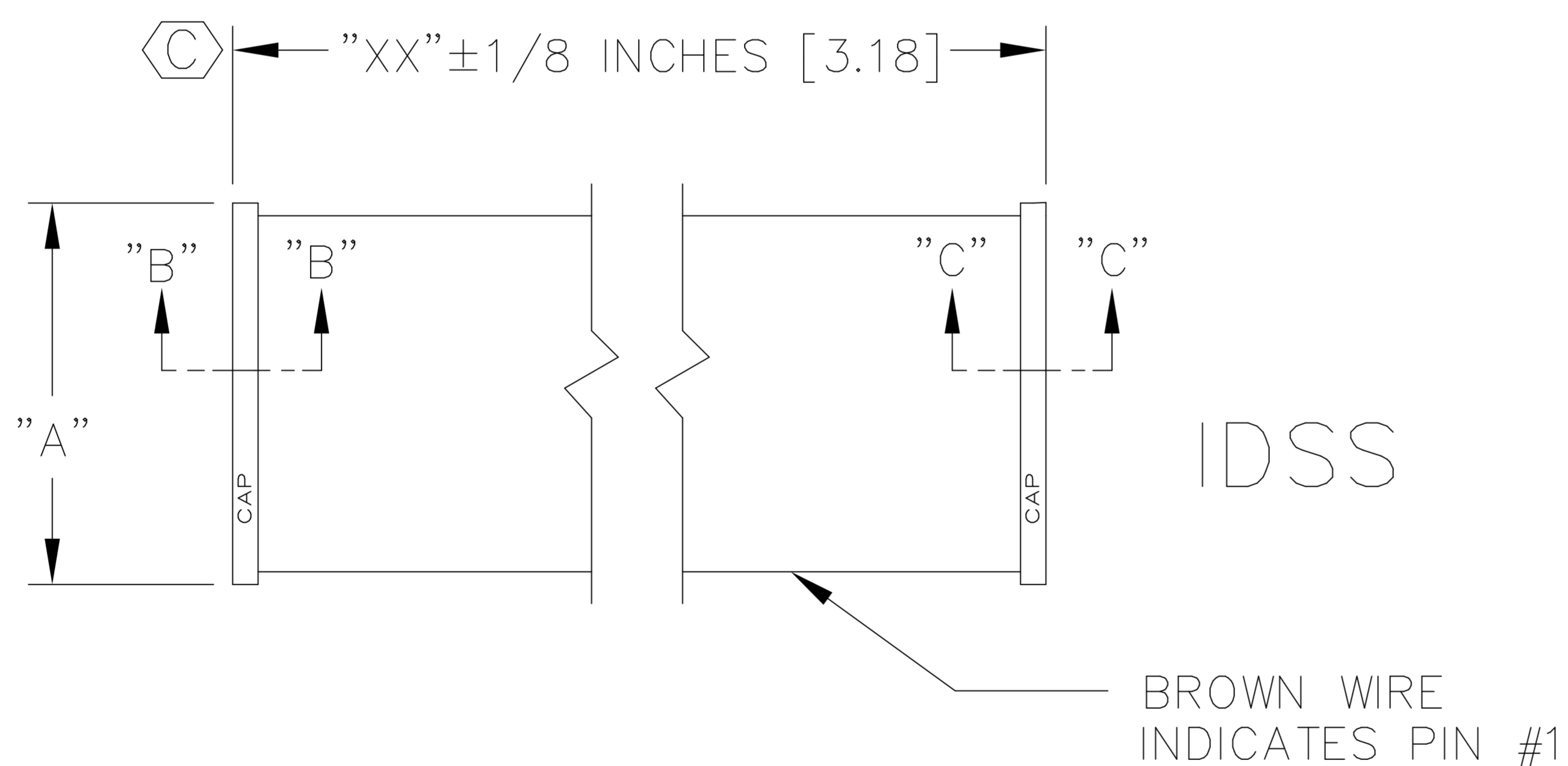
DO NOT SCALE FROM THIS PRINT

DIMENSIONS ARE IN INCHES		UNLESS OTHERWISE NOTED	TOLERANCES ARE:
ONE PLACE DECIMALS: ± .1 [3]	THREE PLACE DECIMALS: ± .005 [.13]	ANGLES	± 5°
TWO PLACE DECIMALS: ± .01 [.3]	FOUR PLACE DECIMALS: ± .0020 [.051]		

TITLE: ASSEMBLY	DWG NO:
INSULATION DISPLACEMENT SOCKET CONNECTOR	IDSX-XX-X-XX-XXX-XXX
	SHEET OF 2



POSITION	"D"
2,3,4	.360 ± .005 / .000 [9.14 ± .13 / .00]
5 AND UP	.365 ± .010 / .005 [9.27 ± .25 / .13]



USE CABLE: CB-XX-28-7/36-050-C (IDSD)
 USE CABLE: CB-XX-28-7/36-100-C (IDSS)
 IDSD FULL STRIP: "A" = 3.650 ± .005 [92.71 ± .13] REF
 CUT STRIP: "A" ± .015 / .005 [.38 / .13] = ("XX" × .100 [2.54]) + .059 [1.50]
 IDSS FULL STRIP: "A" = 3.610 ± .005 [91.69 ± .13] REF
 CUT STRIP: "A" ± .015 / .005 [.38 / .13] = ("XX" × .100 [2.54]) + .019 [.48]

* NOTE: STANDARD COLOR-CODED CABLE N/A FOR DOUBLE ROW 31 THRU 36 POSITION - SEE -G OPTION.

END ASSEMBLY SPECIFICATIONS
 -S: (SINGLE) ONE IDC ASSEMBLY
 -D: (DOUBLE) TWO IDC ASSEMBLIES

- NOTES
- OPTION -SXX WHEN MATING DOUBLE ROW CONNECTOR WITH 2 SINGLE ROW CONNECTORS, THE OUTER MOST SINGLE WILL BE CONNECTED TO CONDUCTOR #1 AND THE INSIDE SINGLE TO CONDUCTOR #2.
 - USING A #32 MICRO FINISHED .025 ± .0005 [.64 ± .013] SQ POST, INSERTION / WITHDRAWAL FORCES TO BE:
 INSERTION: 4.0 OZ [114 GRAMS] AVG / 6.0 OZ [170 GRAMS] MAX
 WITHDRAWAL: 2.75 OZ [78.0 GRAMS] AVG / 2.0 OZ [57 GRAMS] MIN.
 - MAX ALLOWABLE BOW AFTER ASSEMBLY TO BE .006 INCH/INCH [MM/MM].
 - (C) REPRESENTS CRITICAL DIMENSION FOR STATISTICAL PROCESS CONTROL.
 - A CHAMFER ON THE END OF THE CAP IS GUARANTEED ON FINAL ASSEMBLIES THAT ARE AT LEAST 18 POSITIONS FOR MALE AND FEMALE TERMINATION.
 - ALL ASSEMBLIES TO BE 100% ELECTRICALLY TESTED FOR SHORTS AND OPENS.
 - ALL ASSEMBLIES TO BE 100% HI-POT TESTED AT 1000V.
 - WIRE: 28 AWG, 7/36, TINNED, STRANDED WITH PVC INSULATOR
 - FOR IDSX WITH R OR RW OPTION, CABLE RIB ORIENTATION CAN BE EITHER TOWARDS OR AWAY FROM THE CAP.
 - WHEN CUTTING CABLE TO LENGTH, CONDUCTORS SHOULD NOT EXTEND PAST THE CABLE INSULATION, EXTENDING LESS THAN 25% OF CABLE THICKNESS ON CONSECUTIVE AND LESS THAN 50% OF CABLE THICKNESS ON NON-CONSECUTIVE STRANDS IS CONSIDERED A PROCESS INDICATOR.

CONTACT IS ALWAYS ASSEMBLED TO INSIDE OF SINGLE ROW CONNECTORS
 RIBS OF GRAY CABLE GO TO CAP SIDE

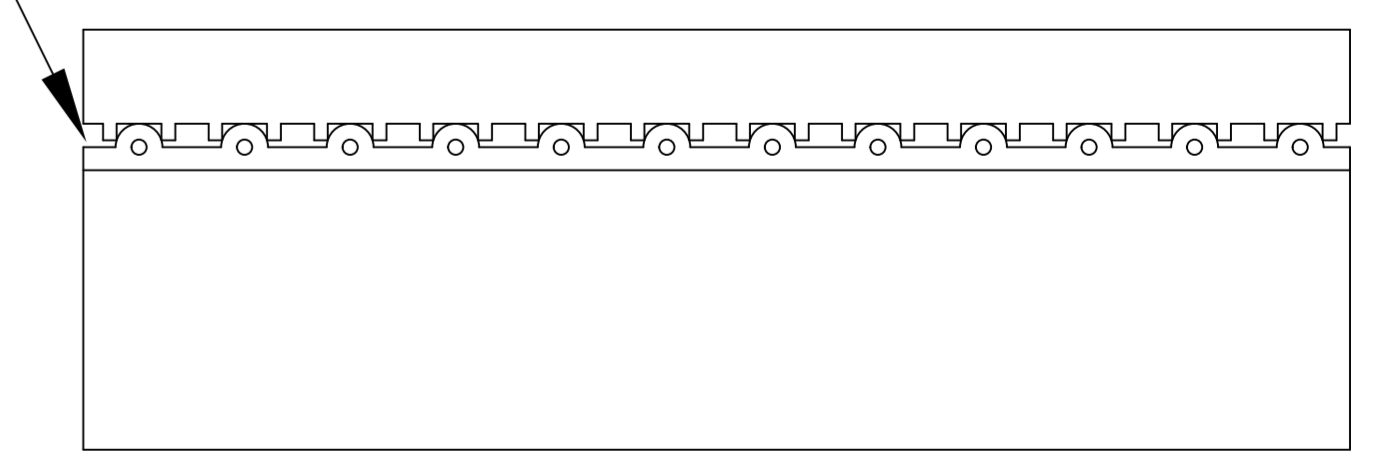


FIG 1 (SEE NOTE 9)

PROPRIETARY NOTE
 THIS DOCUMENT CONTAINS INFORMATION CONFIDENTIAL AND PROPRIETARY TO SAMTEC INC. AND SHALL NOT BE REPRODUCED OR TRANSFERRED TO OTHER DOCUMENTS OR DISCLOSED TO OTHERS OR USED FOR ANY PURPOSE OTHER THAN THAT FOR WHICH IT WAS OBTAINED WITHOUT THE EXPRESSED WRITTEN CONSENT OF SAMTEC INC.

samtec
 520 PARK EAST BLVD. NEW ALBANY, INDIANA 47150
 PHONE (812) 944-6733 P.O. BOX 1147
 CODE 55322

MADE BY: PURVIS 11-02-88

IDSX-XX-X-XX-XXX-XXX
 SHEET 1 OF 2